



# TABLE OF CONTENTS

5	<b>SATELLITE RESTROOMS, HANDWASH &amp; ACCESSORIES</b>	41	<b>SANITRAX TECH MODULE</b>
7	TUFWAY	42	SANITRAX SHOWER 1.0
9	MONDO	43	SANITRAX SHOWER 2.0
11	MAXIM 3000	44	NOMAD
13	LIBERTY II	45	ROVER
14	PORTA SHOWER		
15	MAINS CONNECT	47	<b>LUXURY TRAILERS   SCANVOGN</b>
16	TAG 4		
17	URICLEAN/4MEN	51	<b>SAFE-T-FRESH DEODORIZERS</b>
18	BREEZE	53	QUICK SCENTS
19	WAVE	55	QUICK BLUE
20	MAXIM 3000 SINK	57	BIO
21	SLIMMATE 3 (MONDO & TUFWAY SINK)	59	ECO BLUE
22	HANDISTAND I & II	61	STF
23	HOLDING TANKS	63	FRAGRANCE BOOSTERS
25	FLUSH KITS	65	HAND CARE
26	ADDITIONAL PRODUCTS	67	CLEANING PRODUCTS
27	LIFT KITS	69	ACCESSORIES
28	GLOBAL <small>(US SOURCED)</small>		
29	FREEDOM <small>(US SOURCED)</small>		
30	ASPEN <small>(US SOURCED)</small>	71	<b>SERVICE UNITS</b>
31	AXXIS <small>(US SOURCED)</small>	74	MAL 225
32	HIGHRISE <small>(US SOURCED)</small>	75	MAL 250
33	AGWASH <small>(US SOURCED)</small>	76	MAL 300
34	PRO-22/PRO-12 <small>(US SOURCED)</small>	77	MAL 450
		78	MAL 650
37	<b>SATELLITE VACUUM TECHNOLOGY   SANITRAX</b>	79	MGA 925
38	SANITRAX TOILET MODULE	81	CUSTOM-MADE UNITS
39	SANITRAX WASHBASIN MODULE		
40	SANITRAX URINAL MODULE	83	<b>MADAMEPEE</b>
		91	<b>CONTACT</b>

*\*All dimensions and weights are approximate and are subject to change without notice.*





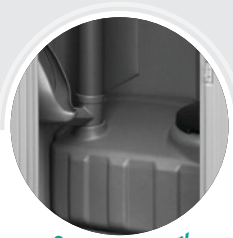
**RESTROOM DIVISION**

**RESTROOM, SPECIALTY, HANDWASH & ACCESSORIES**





MOULDED-IN VENTS



265-LITER TANK



UNBREAKABLE CORNERS

# TUFWAY

A unique combination of durability and comfort is why operators and end-users have made Tufway the most used restroom in the world. By design, the Tufway interior is built for user comfort. It has a spacious, well-ventilated interior to reduce odors due to simple, yet important features. A combination of floor and molded-in wall vents facilitate continuous air flow. The urinal drains down the vent pipe, which prevents unwanted tank odors from venting back into the cabana. The seat is positioned at the furthest point from the urinal, away from odor and user's direct sight. There is also a convenient door hook to hang a purse or jacket. Together, these features produce a more comfortable, pleasant experience for the end-user.

## SPECIFICATIONS

<b>HEIGHT</b>	- 2.24 M
<b>WIDTH</b>	- 1.12 M
<b>DEPTH</b>	- 1.22 M
<b>DOOR OPEN</b>	- 1.85 X 0.61 M
<b>FLOOR AREA</b>	- 0.56 M <sup>2</sup>
<b>TANK VOLUME</b>	- 265 L
<b>SEAT HEIGHT</b>	- 457 MM
<b>WEIGHT</b>	- 75 KG

## COLORS



STANDARD



ALL PANEL/FRONT  
COMBINATIONS ARE  
POSSIBLE

## HANDWASH AND ADDITIONAL OPTIONS



**Slimmate handwash**  
Capacity: 38 L  
Number of uses: 186



**Slimmate Forearm handwash**  
Capacity: 38 L  
Number of uses: 186



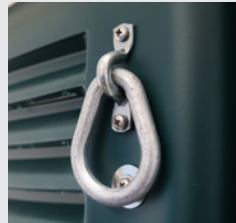
**Grid floor**  
(also available in foot flush version)



**Moulded panels**  
with company logo



**Kit to lift the Tufway**  
with a full tank

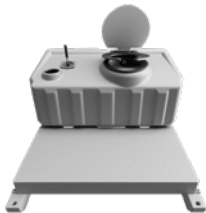


**Kit to lift the Tufway**  
with an empty tank

Additionally, we also offer further **accessories** such as: soap dispensers, towel dispensers, corner shelf, gender indicator, mirror, other toilet paper holders, solar light and solar fan.



## FLUSHING SYSTEMS



**Basic flush kit**  
Hand or foot pump  
Capacity: 265 L



**Premium flush kit**  
Hand or foot pump  
Capacity: 265 L



**Premium Flapper flush kit**  
Hand or foot pump  
Capacity: 265 L

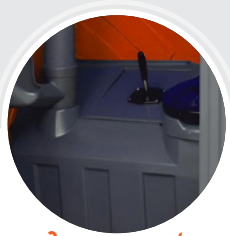


# MONDO

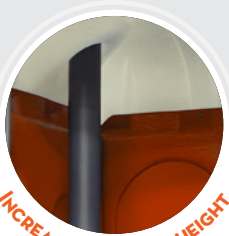
Your customers will love the Mondo. This high-quality unit has been a hit for years in Europe and is now taking the rest of the world by storm. Made from the best materials only, the Mondo complies with the highest hygiene and comfort requirements. This toilet will without a doubt always retain its unique look.



**DISTINCT LOOK**



**265-LITER TANK**



**INCREASED INTERIOR HEIGHT**

## COLORS



STANDARD



### SPECIFICATIONS

**HEIGHT** - 2.31 M  
**WIDTH** - 1.12 M  
**DEPTH** - 1.22 M  
**DOOR OPEN** - 1.94 X 0.61 M  
**FLOOR AREA** - 0.56 M<sup>2</sup>  
**TANK VOLUME** - 265 L  
**SEAT HEIGHT** - 457 MM  
**WEIGHT** - 73.5 KG

ONLY AVAILABLE  
WITH GREY FRONT

## HANDWASH AND ADDITIONAL OPTIONS



**Slimmate handwash**  
Capacity: 38 L  
Number of uses: 186



**Slimmate Forearm handwash**  
Capacity: 38 L  
Number of uses: 186



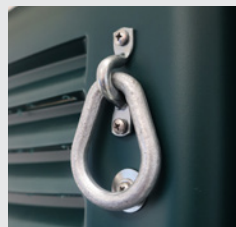
**Grid floor**  
(also available in foot flush version)



**Moulded panels**  
with company logo



**Kit to lift the Mondo**  
with a full tank

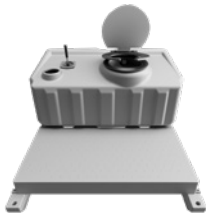


**Kit to lift the Mondo**  
with an empty tank



Additionally, we also offer further **accessories** such as: soap dispensers, towel dispensers, corner shelf, gender indicator, mirror, other toilet paper holders, solar light and solar fan.

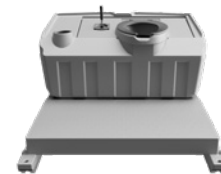
## FLUSHING SYSTEMS



**Basic flush kit**  
Hand or foot pump  
Capacity: 265 L



**Premium flush kit**  
Hand or foot pump  
Capacity: 265 L



**Premium Flapper flush kit**  
Hand or foot pump  
Capacity: 265 L



**Squat tank**  
Hand pump (hand shower optional)



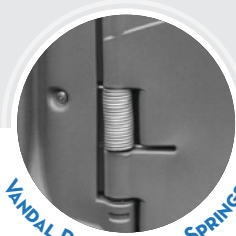
**Squat tank**  
Foot pump (hand shower optional)



UNIVERSAL SHELF



ULTRA STRONG TWIN-PANEL WALLS



VANDAL PROOF DOOR SPRINGS

# MAXIM 3000

The most outstanding features of the Maxim 3000 are its ultra-smooth walls and spacious interior. With no ledges to collect dust, debris or waste, the Maxim 3000 can maintain a clean appearance long after a service call. Inside, the rounded corners create more open space, and a uniquely contoured tank provides end-users a more comfortable sitting position. Along with its beautiful appearance, the Maxim 3000 is also incredibly strong. By utilizing industry leading technology to create twin-panel walls and a blow-molded front, the cabana is almost indestructible. The cabana is also strengthened by interlocking corners, a fitted base, and an overlapping roof design.

## SPECIFICATIONS

**HEIGHT** - 2.29 M  
**WIDTH** - 1.12 M  
**DEPTH** - 1.22 M  
**DOOR OPEN** - 1.92 X 0.61 M  
**FLOOR AREA** - 0.53 M<sup>2</sup>  
**TANK VOLUME** - 265 L  
**SEAT HEIGHT** - 476 MM  
**WEIGHT** - 85.8 KG

## COLORS



STANDARD



## HANDWASH AND ADDITIONAL OPTIONS



**Handwash with small basin**  
Capacity: 32.5 L



**Handwash with large basin**  
Capacity: 32.5 L



**Grid floor**  
(also available in foot flush version)



**Kit to lift the Maxim with a full tank**



**Kit to lift the Maxim with an empty tank**

Additionally, we also offer further **accessories** such as: soap dispensers, towel dispensers, corner shelf, gender indicator, mirror, other toilet paper holders, solar light and solar fan.

## FLUSHING SYSTEMS



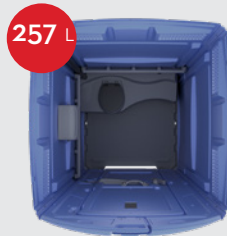
**Basic flush kit**  
Hand or foot pump  
Capacity: 265 L



**Premium flush kit**  
Hand or foot pump  
Capacity: 265 L



COLORS



SPECIFICATIONS

- HEIGHT - 2.27 M
- WIDTH - 1.64 M
- DEPTH - 1.60 M
- FLOOR AREA - 1.87 M<sup>2</sup>
- STANDARD TANK - 132 L
- OPTIONAL TANK - 257 L
- SEAT HEIGHT - 455 MM
- WEIGHT - 113 KG

# LIBERTY



Looking to give your customers a little more? Then upgrade your Liberty to a family room. With the ability to mix and match all the options you can turn your Liberty into more than just a restroom. The baby changing station, the handwash, the urinal and the waste basket are great additions to increase flexibility and usability. Multiple coat hooks and shelves give parents the room needed to keep their belongings off the floor and out of the way. What's more, the new version of Liberty includes a base with raised edges, making it sturdier and easier to transport.

Turn your wheel chair accessible unit into a 3-man or 6-man urinal with a unique conversion kit. The double SRO unit features two troughs with room for three users on each side. For additional capacity, the SRO urinals can be connected to external tanks.

## AVAILABLE OPTIONS

- Baby Changing Station
- Coat hooks
- Large Mirror
- Handwash station with hand pump
- Shelf
- Solar Light
- Solar Fan
- Waste Basket
- SRO urinal



NEW DOOR HANDLES



OPTIMIZED DOOR SPRINGS

## ADDITIONAL FEATURES



BUILT-IN URINAL



BABY CHANGING STATION

*Ideal for families with children*



HANDWASH STATION WITH HAND PUMP



### AVAILABLE AS:

#### MONDO / TUFWAY

Colours and dimensions: see Mondo and Tufway specifications.

#### EMPTY CABIN ALSO AVAILABLE

WEIGHT: 67 KG



# SHOWER CABIN

## HOT SHOWER

By design, the shower cabin is simple to connect to the available water source and the gas heater provides an almost immediate flow of warm water for users. Those setting up the shower and those using it will both be pleasantly surprised at how well the cabin shower meets the need for comfort and convenience.

## COLD SHOWER

The mobile, economic cold water shower cabin impresses both rental companies and users and is already being used on beaches, lakesides and camping sites across Europe. The shower head can be adjusted manually, from a powerful massage jet to a soft normal spray.

## SPECIFICATIONS

AUTOMATIC IGNITION SYSTEM  
 IGNITION: 2 "D" TYPE BATTERIES  
 WATER CONNECTION: GARDEN HOSE TYPE  
 WATER PRESSURE: 0.25-1 BAR  
 WATER FLOW CAPACITY: 5.7 LPM  
 TYPE OF GAS: BUTANE OR PROPANE  
 GAS PRESSURE: 30 MBAR B/P  
 HEAT INPUT (Hs): 10 KW  
 SUPPLY PRESSURE\*: 28-30/37, 50 MBAR  
 DURATION OF GAS CYLINDER: 59 HOURS  
 WEIGHT: 127 KG

\*MAY VARY BY COUNTRY

# MAINS CONNECT

This sewer connection cabin meets the highest requirements in functionality and comfort. It can be quickly and easily connected to the sewage system and offers a professional, alternative solution for all rental companies who want to make sure that their users really feel at home! The Mains Connect and hot Mains Connect are available in our Mondo and Tufway models.



CERAMIC TOILET



LARGE WASH BASIN



WASTE WATER EXIT

## HOT MAINS CONNECT

- 3KW INFRARED WATER HEATER
- MOTION SENSOR FOR 20 SECONDS OF WATER FLOW
- 16 AMP POWER SOCKET FITTED TO THE REAR OF THE CABIN
- RCD PROTECTION
- WATERPROOF FUSE BOX
- OPTIONAL INFRA-RED ACTIVATED LIGHT
- WEIGHT: 73.5 KG (MONDO), 75 KG (TUFWAY)

## AVAILABLE AS:

### MONDO / TUFWAY

Colours and dimensions: see Mondo and Tufway specifications.



FRESH WATER INLET

Accommodating several people at once, it avoids big queues and increases the waste capacity without the need of transporting additional toilets to the event site. An added advantage is that your other event toilets will stay cleaner for a longer period of time during the event.



### URICLEAN

**DIMENSIONS** - 2.09 X 1.20 M

**EMPTY WEIGHT** - 79 KG

**CAPACITY** - 374 L (1250 USES)

### 4MEN

**DIMENSIONS** - 1.61 X 1.12 X 1.12 M

**HEIGHT** WITH PRIVACY SCREENS 1.8 M

**EMPTY WEIGHT** - 40 KG

**CAPACITY** - 400 L (1333 USES)

This portable urinal can accommodate three users at once and be connected to a drain. With its heavy-duty lifting ring, suitable for lifting it with a full tank, it can be transported easily from site to site. Combine the Uriclean with your portable toilets during events, as many other operators do. More and more towns now require its use in order to prevent urine damage to public or historic buildings. Its price beats all competition, perfect as a long-term investment.

# 4MEN

The 4Men meets all men's wishes when it's about using a portable urinal at an event. The time when it was not easy to handle the drinking glasses is over. Indeed, the 4Men has been built with specific places to put drinking glasses to offer a more pleasant experience to the end-user. Easy-to-maintain and easy-to-transport, the two halves can be separated and nest into each other, allowing up to 5 4Men per pallet. Finally, offer more privacy to the end-users thanks to the screens that you can fix on the top of the urinal (optional). Customize the colour with a minimum order of 30 pieces.



With privacy screens  
(optional)



# TAG

The Tag balances the proven strengths of the original Tag sink with enhanced design and functionality to offer a more operator friendly free-standing handwash station. Using industry leading technology, the Tag is more durable, easier to handle and service, and can be supplied faster, in larger quantities. With greater flexibility to hold almost any size soap and towel dispenser on the market while still fitting comfortably in most standard-size portable restrooms for ease of transportation, the next generation Tag sink is a low-maintenance, essential workhorse for your fleet.

150 CM

67CM

49 CM



## SPECIFICATIONS

**HEIGHT** - 150 CM  
**WIDTH** - 49 CM  
**DEPTH** - 67 CM  
**EMPTY WEIGHT** - 29,5 KG  
**FRESH VOLUME** - 83 L  
**WASTE VOLUME** - 83 L  
**COLOR** - GRAY

**OPTIONAL:**  
TOWEL DISPENSERS  
SOAP DISPENSERS





# BREEZE

With an eye-catching design and sealed water tank to insure proper hygiene, the Breeze will thrill event coordinators who truly want both. It has two stations with full fingertip to elbow washing and operates with hands-free foot pumps that have been standard in Satellite products for many years, providing care-free operation.

To maintain its attractiveness, the blue areas have a fleck pattern to hide scuffs and scratches. It also has extended bumpers on the side and top to buffer it while traveling. There are fresh and grey water drain plugs and an additional pump out port on the base for waste water. To aid drivers, all plugs are tethered to the unit to prevent loss or damage. It has two handles for lifting and fits easily inside most portables for ease of transport. Most of all, it has a sealed fresh water tank where chlorine can be added to kill bacteria. All in all, it is a breeze to maintain and operate.

## SPECIFICATIONS

**HEIGHT** - 164 CM  
**WIDTH** - 65 CM  
**LENGTH** - 49 CM  
**WEIGHT** - 30 KG  
**FRESH VOLUME** - 76 L  
**WASTE VOLUME** - 83 L  
**COLOR** - GRAY/BLUE  
**BUILT-IN TOWEL DISPENSERS**

**OPTIONAL:**  
 SOAP DISPENSERS

# WAVE

The Wave has a sealed fresh water tank for added hygiene, which allows for the use of chlorine tablets to kill harmful bacteria that may be living in the water, helping protect the user and the public from harm.

Placing two units back-to-back allows for a four-station hand washing facility to meet all your needs.



137 CM

107 CM



FOOT PUMP OPERATION



VANDAL-RESISTANT NOZZLE



TOWEL DISPENSERS (OPTIONAL)

## SPECIFICATIONS

**HEIGHT** - 137 CM  
**WIDTH** - 107 CM  
**DEPTH** - 61 CM  
**FRESH VOLUME** - 163 L  
**WASTE VOLUME** - 178 L  
**COLOR** - GRAY  
**WEIGHT** - 54 KG

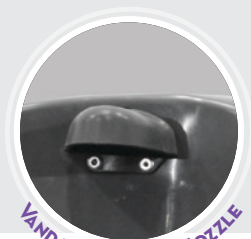
### OPTIONAL:

TOWEL DISPENSERS  
SOAP DISPENSERS



# MAXIM 3000 SINK

Stylish corner in-unit sink with foot pump integrates seamlessly with the interior of the Maxim 3000. Extra-large basin is highly polished for easy cleaning, and to keep it looking clean after multiple uses.



VANDAL-RESISTANT NOZZLE



FOOT PUMP OPERATION



## SPECIFICATIONS

**HEIGHT** - 98 CM

**WIDTH** - 56 CM

**DEPTH** - 23 CM

**COLOR** - GRAY

**WEIGHT EMPTY** - 6.4 KG

**TANK VOLUME** - 32.5 L

# SLIMMATE

This compact in-unit sink has a water-conserving “fan spray” nozzle and still has a generous amount of fresh water for a high number of washes per fill. The foot pump is positioned so users can operate the unit easily and get a thorough washing with limited pumps.



## SPECIFICATIONS

**HEIGHT** - 98 CM

**WIDTH** - 48 CM

**DEPTH** - 20 CM

**COLOR** - GRAY

**WEIGHT EMPTY** - 6.4 KG

**TANK VOLUME** - 38 L

# HANDISTAND I & II

The low-cost Handistand will pay for itself in half the time and cost less to maintain than most other hand sanitation stands.

The Handistand is made from unbreakable molded polyethylene that can withstand the force of vandals and nature so you can keep renting it year after year. If faster profits and long-term benefits are what you want from a hand sanitation stand, then Handistand will deliver.

## SPECIFICATIONS

### HANDISTAND I

**HEIGHT** - 152 CM

**WIDTH** - 51 CM

**DEPTH** - 51 CM

**WEIGHT** - 7.25 KG

**COLOR** - GRAY



The Handistand II is a straightforward, convenient hand sanitizing station for any occasion. The hollow pyramid shape makes it easy to maneuver for transport or storage. With the capacity to hold four dispensers, the Handistand II can be as versatile as you need it.

## SPECIFICATIONS

### HANDISTAND II

**HEIGHT** - 119 CM

**BASE DIMENSIONS** -

76 X 76 CM

**TOP DIMENSIONS** -

21 X 21 CM

**WEIGHT** - 10 KG

**COLOR** - GRIS

CAN HOLD UP TO 90 KG OF WATER/SAND

## HOLDING TANK

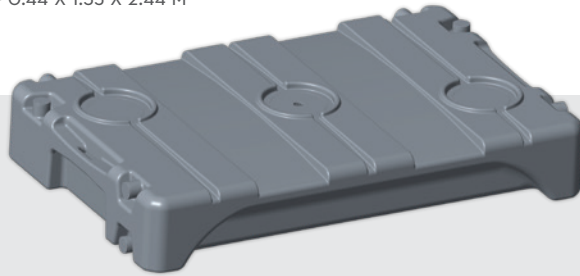
This mobile holding tank can be used as a waste water tank or as a fresh water tank to ensure a longer lasting fresh water supply. It is also useful as temporary storage to limit your amount of visits to the sewage treatment plant. With two internal pillars and thickened corners, the holding tank can be stacked 6-high when empty. All fittings are molded, plus the tanks can be connected end-to-end with rubbers. All connectors are sunk in to guard against breakage.

### SPECIFICATIONS

**DIMENSIONS (HxWxD)** - 0.44 X 1.35 X 2.44 M

**EMPTY WEIGHT** - 59 KG

**CAPACITY** - 1135 L



## REMOVABLE TANK

Our removable tank is designed for use in spaces too small for our full-size toilets, such as on the floor of a building or other hard-to-reach areas, or inside toilet containers or toilets with removable tanks. Its handles make it easy to move around.

(Flushing is available as an option)



## CONTAINMENT TRAY

Durable tray for collecting residues when cleaning cabins. Built strong for continual use, Satellite's containment tray has a thickened base to hold its shape, last longer and fit all standard-size restroom bases.



## TOILET MOVER

Move any type of portable toilet easily with this lightweight, steel framed trolley. Tilt the trolley upright, slide the two steel rods under the toilet base and tilt backwards. The toilet is held firmly in place and rests safely on four tires for added support and equal weight distribution. Protect your equipment from damage and your employees from injury.

The mover is suitable for all self-contained toilets, including PRM models.

# FLUSH KITS

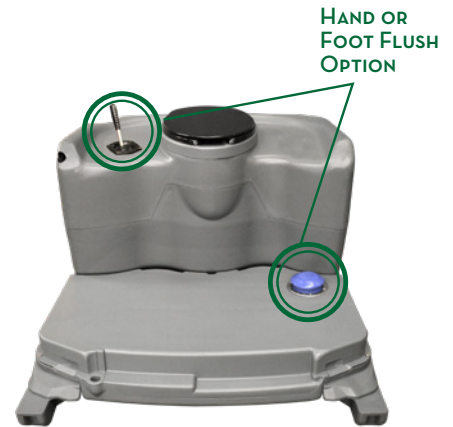
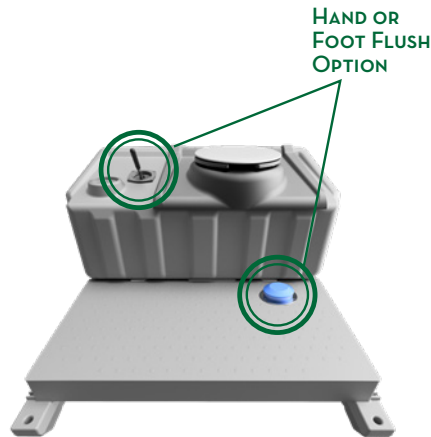
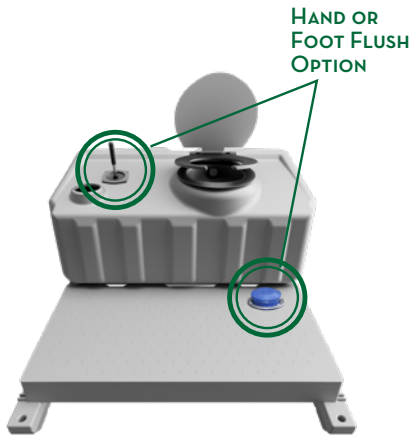
FREEDOM & LIBERTY



## RECIRCULATING HAND FLUSH

The Western Recirculating flushing system is a quick and easy flushing upgrade to Satellite's wheelchair accessible restrooms. Satellite's Recirculating filter system prevents waste from being pumped back through the bowl. Leaving it looking fresh and clean after each use. The Western Hand Flush pump system fits both the 132-litre and 257-litre waste tanks.

# FLUSH KITS



## BASIC FLUSH KIT

The recirculating flushing system is a popular accessory for customers since it can be installed quickly to easily upgrade any of Satellite's standard, wheelchair accessible, and many other portable restrooms into a flushing unit. Satellite's re-circulating filter system prevents waste from being pumped back through the bowl. Leaving it looking fresh and clean after each use. The Western Bowl Flush system is available with a hand or foot pump option.

## PREMIUM FLUSH KIT

Satellite's Flip Top tank has a powerful nozzle flushing system. This unique system is operated by a low-maintenance hand pump installed on the waste tank deck or foot pump installed into the plastic roto-molded skid. Using fresh water from the Pro-22 sink to flush the waste, each user gets that at-home experience in a portable restroom.

## PREMIUM FLAPPER FLUSH KIT

This unique flush system features a plastic flapper bowl that hides waste from view and seals tight to reduce odor. Retrofit any of Satellite's standard units and some specialty units into a flushing unit with the versatile flapper bowl. Flapper bowls can be installed as a fresh flush if the Pro-22 sink is included or recirculating flush system if no sink is present. The flapper bowl flush system is available with a hand or foot pump option.

## SOLAR LIGHT

This solar light is specifically designed for portable toilets. The light is inserted through a cut-out hold in the roof from above, leaving the solar panel exposed. A rubber gasket ensures that the fitting remains watertight. The light is secured to the toilet structure by a back-nut with a motion sensor, which will turn the light on when movement is detected inside the toilet, and off when there is no further movement. The light is also fitted with a day/night sensor so it will not turn on during the day.

- Dimensions (DxH): 90 x 78 mm
- 5 Super Bright LEDs emitting 35 lumens
- 1.2 V NI-mh 900mAh rechargeable battery
- 2V 130mA solar panel with built-in day/night sensor and overcharge protection
- Motion sensor with 100-degree angle 5-meter activation zone
- Lighting time: the light will remain on when detecting movement and turn off after no movement for 40 seconds



## SOLAR FAN

Operation mode:

- When the sunlight is over 40,000 lux, the vent will work continuously.
- When sunlight is approx. 8,000 lux, the vent will work for 45 sec. after a charging time of about 4 minutes.
- The charging time will be shorter if the sunlight is brighter.

### SPECIFICATIONS

**DIMENSIONS (HxWxD)** - 0.44 X 1.35 X 2.44 CM

**FAN SPEED** - 2500 RPM

**MAX AIR FLOW** - 32.99 CF/M

**NOISE LEVEL** - 27 DB

**OVERALL SIZE** - 200 X 83 MM (DIAMETER X HEIGHT)

**INSERT TUBE** - 82 X 58 MM (DIAMETER X HEIGHT)

# UNIVERSAL LIFT KIT

Our new wet lift is more universal than any of our previous wet lifts. It is compatible with the Aspen, Maxim 3000, Tufway, Axxis and the Global. This newly designed lift allows you to move it from model to model in a relatively short time making it extremely versatile.

- Max. lift weight including lift kit and restroom is 460 kg
- Not to be used for lifting people or objects other than a single standard toilet



US SOURCED



# GLOBAL

Satellite's Global restroom has leapt to the top of the industry, becoming a staple cost-effective restroom for operators in the USA. The clean, rigid design of the Global makes it great for events or construction sites. Key features include the new impact base, three-roll toilet paper holder, large hands-free door latch, and hover handle. Increased side panel thickness and a solid door frame make the Global one of the strongest units on the market. The interior layout creates a spacious feel that gives the end-users more space to move around. Smooth side panels with shallow impressions reduce dirt and debris buildup making the Global easy to clean.



HOVER HANDLES



ONE-PIECE, BLOW-MOLDED DOOR



HANDS-FREE DOOR LATCH

## COLORS



STANDARD



## SPECIFICATIONS

- HEIGHT - 2.29 M
- WIDTH - 1.12 M
- DEPTH - 1.22 M
- DOOR OPEN - 1.83 X 0.61 M
- FLOOR AREA - 0.54 M<sup>2</sup>
- TANK VOLUME - 265 L
- SEAT HEIGHT - 476 MM
- WEIGHT - 77 KG

# FREEDOM

The Freedom is a fully ADA-compliant restroom with longer handrails and an oversized closure latch, making it extremely user friendly for end-users in wheelchairs.

The Freedom is stronger, thanks to a base with raised edges and reinforced side panels and roof. In impact tests, the floor and wall connections withstood twice the force of previous models without damage. The shape of the base also facilitates lifting with a forklift truck.

*Ideal for families with children*



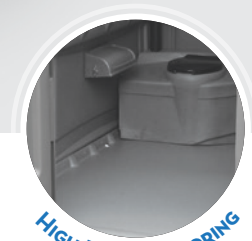
US SOURCED



50% STRONGER ROOF



RIGID DOOR FRAME



HIGH IMPACT FLOORING

## SPECIFICATIONS

- HEIGHT - 2.3 M
- WIDTH - 1.68 M
- DEPTH - 2.2 M
- DOOR OPEN - 2.05 X 0.83 M
- FLOOR AREA - 2.67 M<sup>2</sup>
- STANDARD TANK - 133 L
- OPTIONAL TANK - 257 L
- SEAT HEIGHT - 470 MM
- WEIGHT - 141 KG



## COLORS



STANDARD



PREMIUM

US SOURCED



# ASPEN

The newly redesigned Aspen is a crowd pleaser and will elevate the mood of any event. The streamlined new design gives the Aspen a sleek and modern feel. Smoothing out and creating shallower impressions on the side panels and door gives the Aspen that WOW factor every end-user wants to see! New features include a more durable roof, larger tank, large splash resistant urinal, private molded-in vent screens, coat hook, enclosed door springs and closure, large hover handle, hands-free latch, impact base, and the new universal shelf. As you can see Satellite's engineering team left no stone unturned when redesigning the Aspen.



HANDS-FREE LATCH



NEW UNIVERSAL SHELF



ROUNDED URINAL

## COLORS



STANDARD

PREMIUM



PREMIUM+

SPECIAL ORDER



## SPECIFICATIONS

**HEIGHT** - 2.31 M  
**WIDTH** - 1.12 M  
**DEPTH** - 1.22 M  
**DOOR OPEN** - 1.86 X 0.64 M  
**FLOOR AREA** - 0.54 M<sup>2</sup>  
**TANK VOLUME** - 227 L  
**SEAT HEIGHT** - 432 MM  
**WEIGHT** - 74.8 KG

# AXXIS

The Axxis restroom is a significant innovation to our line of portable restrooms and the portable sanitation industry. When Satellite set out to redesign the Axxis we listened and learned from the very best, YOU, our customer! Featuring durable stainless-steel hinges, hands-free door latch, large hover handle, a re-engineered door assembly, and Satellite's impact base, the Axxis is not only an end-user's dream, but an operator's best friend. The improved features create a spacious feel that gives users the room to move around freely. Smooth surfaces with shallow impressions reduce dirt and debris buildup keeping the Axxis looking clean between services.

## SPECIFICATIONS

**HEIGHT STANDARD ROOF** - 2.27 M  
**HEIGHT KEYSTONE ROOF** - 2.34 M  
**WIDTH** - 1.09 M  
**DEPTH** - 1.19 M  
**FLOOR AREA** - 0.56 M<sup>2</sup>  
**TANK VOLUME** - 227 L  
**SEAT HEIGHT** - 476 MM  
**WEIGHT** - 74.8 KG



HANDS-FREE DOOR LATCH



227-LITER TANK



LOW MAINTENANCE, DURABLE HINGES



## COLORS



STANDARD

US SOURCED



# HIGHRISE

This restroom is built exclusively for the highrise construction market and offers end-users and operators a unique set of features. The Highrise is sized to go where other restrooms cannot. With the optional roof it is only 85 cm wide and 2.23 m high. This allows the Highrise to be moved through halls and doorways to the place where workers need it most. The casters are sealed to prevent freeze up and can be greased for continued reliability. The frame and floor are made from galvanized metal to prevent damage while lifting and handling. This uniquely designed restroom fills the need for privacy, maneuverability, and dependability.

## SPECIFICATIONS

**HEIGHT WITHOUT ROOF** - 1.98 M  
**WIDTH** - 0.79 M  
**DEPTH** - 1.35 M  
**TANK VOLUME** - 144 L  
**STANDARD WEIGHT** - 116 KG  
**FULL-FEATURE WEIGHT** - 139 KG

EXTERIOR W/ROOF	INTERIOR
<b>HEIGHT</b> - 2.23 M	<b>HEIGHT</b> - 1.98 M
<b>WIDTH</b> - 0.85 M	<b>WIDTH</b> - 0.76 M
<b>DEPTH</b> - 1.37 M	<b>DEPTH</b> - 1.31 M



# AGWASH

The AgWash upright handwash station mounts externally to all portable restrooms to comply with GAP (Good Agricultural Practices) open-air requirements. It also exceeds GAP's minimum-tank requirement by holding 64.3 litres of water and is equipped with a soap and a towel dispenser. The AgWash operates by pressing on a recessed foot pump and provides approximately 330 washes.

## SPECIFICATIONS

**HEIGHT** - 169 CM

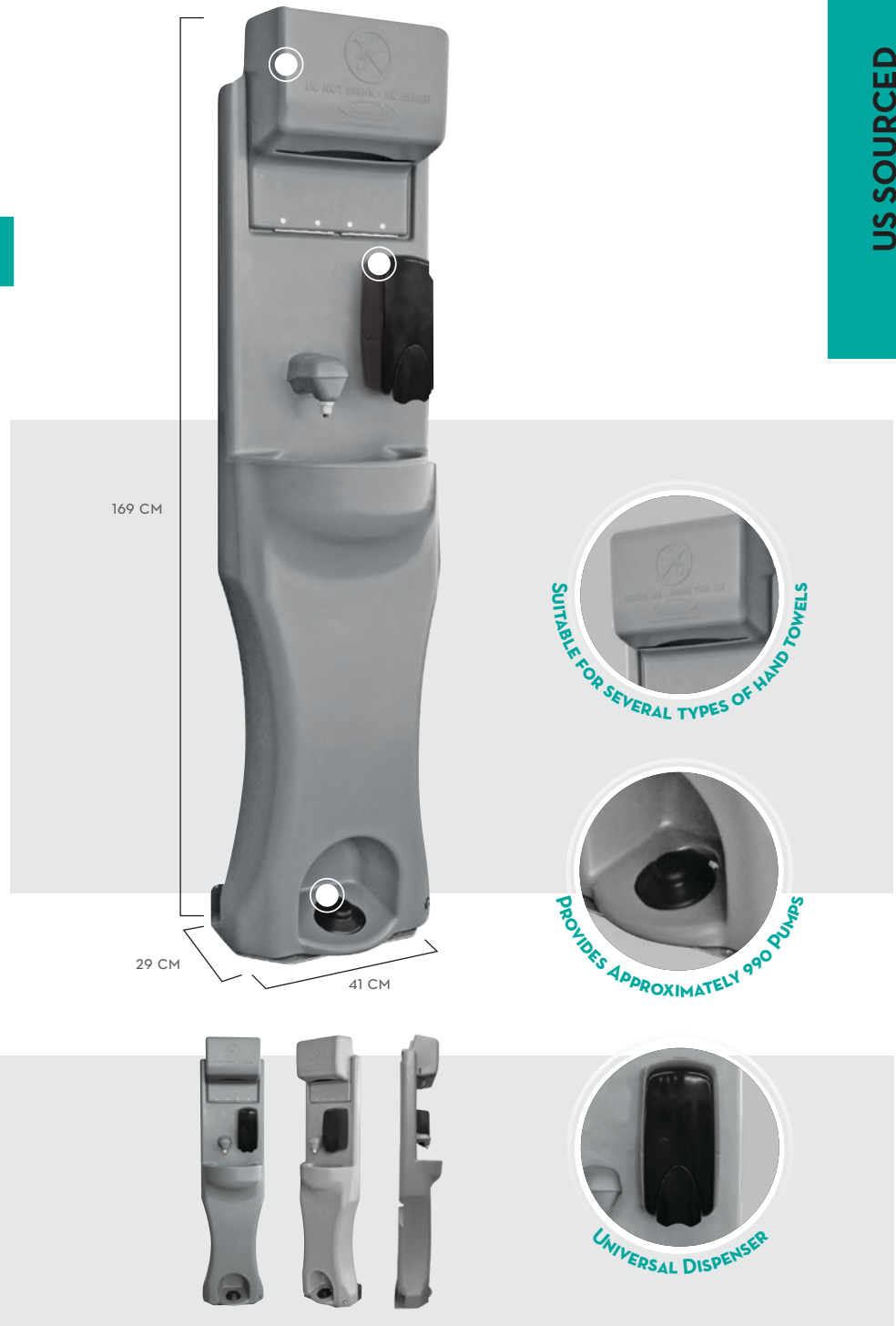
**WIDTH** - 41 CM

**DEPTH** - 29 CM

**FRESH VOLUME** - 64.3 L

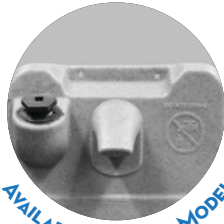
**COLOR** - GRAY

**WEIGHT EMPTY** - 8.4 KG



US SOURCED

US SOURCED



AVAILABLE IN A SLIM MODEL



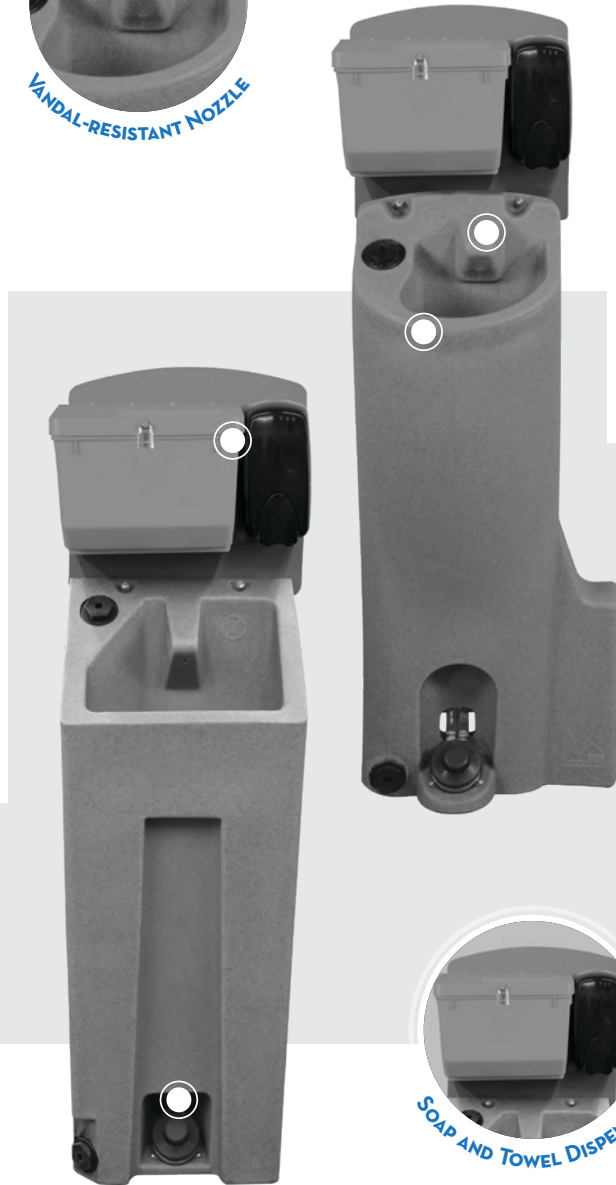
VANDAL-RESISTANT NOZZLE

# PRO-22

This rugged internal handwash station requires the removal of the portable restroom urinal but gives the user 83.3 L of freshwater capacity. In situations requiring a fresh water flushing system, the Pro-22 serves as the unit of choice for both hand washing and as the freshwater reservoir for flushing.

## SPECIFICATIONS

**HEIGHT** - 93 CM  
**WIDTH** - 43 CM  
**DEPTH** - 34 CM  
**COLOR** - GRAY  
**WEIGHT EMPTY** - 11.4 KG  
**TANK VOLUME** - 83.3 L



SOAP AND TOWEL DISPENSER



UNIVERSAL FOOT PUMP

# PRO-12

Possibly the most flexible of the in-unit hand washing stations on the market, the Pro-12 provides ample reservoir space as well as the ability to place it in Vantage and Axxis portable restrooms without removing the urinal.

## SPECIFICATIONS

**HEIGHT** - 112 CM  
**WIDTH** - 48 CM  
**WIDTH SLIM** - 36 CM  
**DEPTH** - 27 CM  
**COLOR** - GRAY  
**WEIGHT EMPTY** - 7.7 KG  
**TANK VOLUME** - 45.4 L



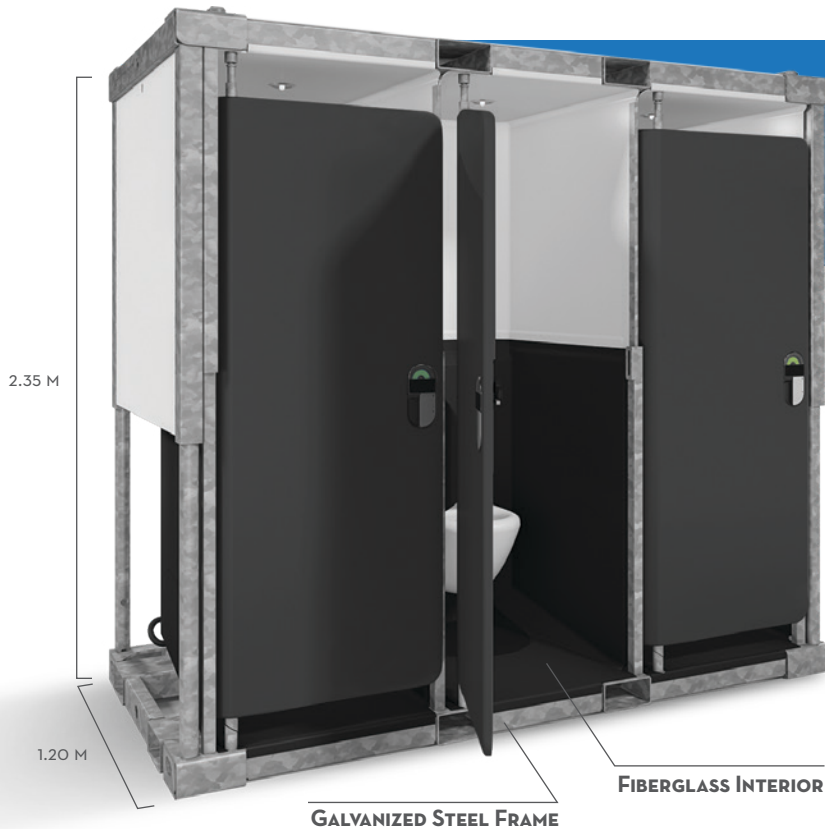


VACUUM TECHNOLOGY DIVISION

SANITRAX



# SANITRAX TOILET MODULE



Satellite's Sanitrax toilets are the world's first on-land modular restrooms powered by vacuum technology. Each module contains three full-size flushable toilets with LED lights and can be upgraded to the Smart Package, which uses infrared sensors to track the number of uses.

Sanitrax doors incorporate a quick-change system that allows operators to interchange (optional) door panel graphics in a matter of minutes. Thus giving operators and venues more marketing options.

One operator can transport up to 24 modules or 72 toilets on a standard truck/trailer combination and installation can be carried out with a minimum of crew, making it the most efficient system in the industry. On average, operators see up to 90% savings compared to fresh water flush toilets and venues see an increase of 40% on food and beverage sales. That's a WIN-WIN!

## TECHNICAL SPECIFICATIONS

**WEIGHT:** 750 kg

**POWER:** 12V, 3W

**WATER USAGE PER FLUSH:** 0.8 l

**WATER SUPPLY CONNECTION:** 3/4" M Camlock

**WASTE WATER DRAINAGE CONNECTION:** 2.5" M Camlock

**WASTE WATER SYSTEM:** Vacuum

**VACUUM PRESSURE IN BAR:** -0.3 to -0.6

**VACUUM PRESSURE IN PSI:** -4.3 to -8.7

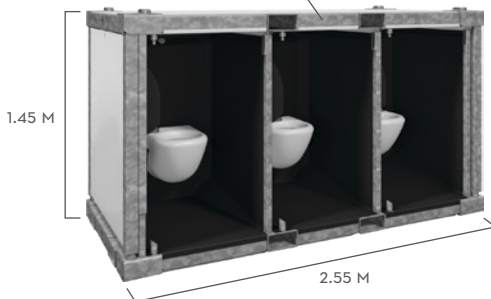
**WATER PRESSURE IN BAR:** 3 to 5

**WATER PRESSURE IN PSI:** 40 to 90

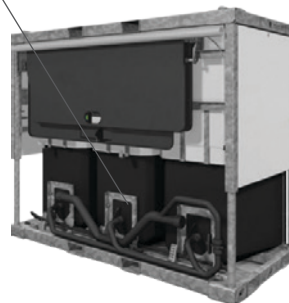
**SHIPPING CONTAINER:** 10 modules

**TRANSPORT:** 24 modules (72 toilets) on a standard truck/trailer combination

### MODULAR DESIGN



### UNIQUE FLUSHING TECHNOLOGY



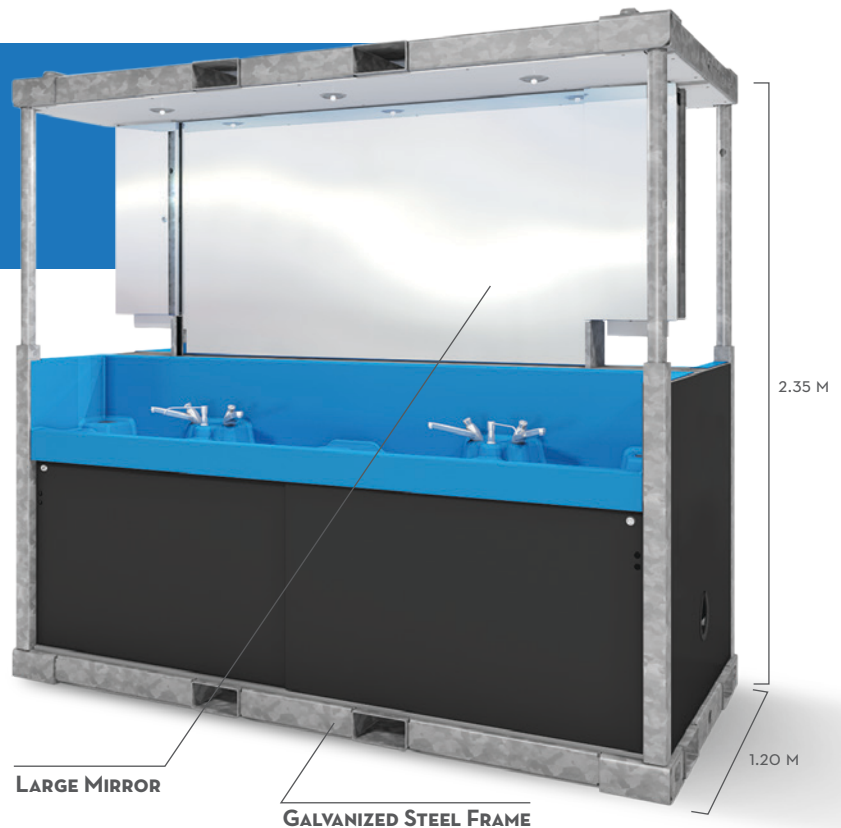
 ENVIRONMENTALLY FRIENDLY  EASY TO CLEAN  EASY TO TRANSPORT

# SANITRAX WASHBASIN MODULE

Satellite Sanitrax Washbasin is extremely practical, attractively designed, and smartly equipped. It's also important that the modules can be thoroughly and quickly cleaned between uses.

Satellite anticipated the end-users' needs when designing the Sanitrax Washbasin. Equipped with eight flow-control adjustable water-saving taps, four on each side, a full-width stainless steel mirror, integrated soap, and hand towel dispensers, gives end-users a full day's worth of service. In addition, four built-in wastebaskets ensure used hand towels can be disposed of easily, keeping the Washbasin looking clean and welcoming.

The Washbasin can be integrated to a vacuum setup or deployed as a mains connect unit.



## TECHNICAL SPECIFICATIONS

**WEIGHT:** 800 kg

**POWER:** 12V, 6W

**WATER FLOW:** Adjustable

**WATER SUPPLY CONNECTION:** 3/4" M Camlock

**WASTE WATER DRAINAGE CONNECTION:** 2.5" M Camlock

**WASTE WATER SYSTEM:** Vacuum

**VACUUM PRESSURE IN BAR:** -0.3 to -0.6

**VACUUM PRESSURE IN PSI:** -4.3 to -8.7

**WATER PRESSURE IN BAR:** 3 to 5

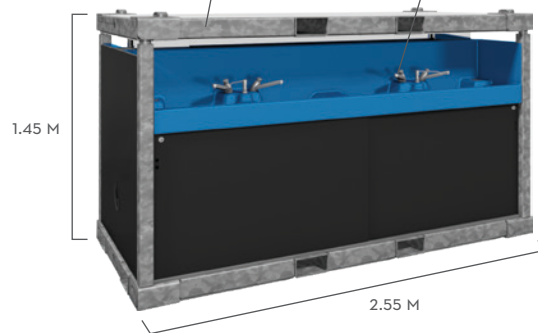
**WATER PRESSURE IN PSI:** 40 to 90

**SHIPPING CONTAINER:** 10 modules

**TRANSPORT:** 24 modules (192 washbasins) on a standard truck/trailer combination

SPACE-SAVING MODULE

EIGHT WATER-SAVING TAPS

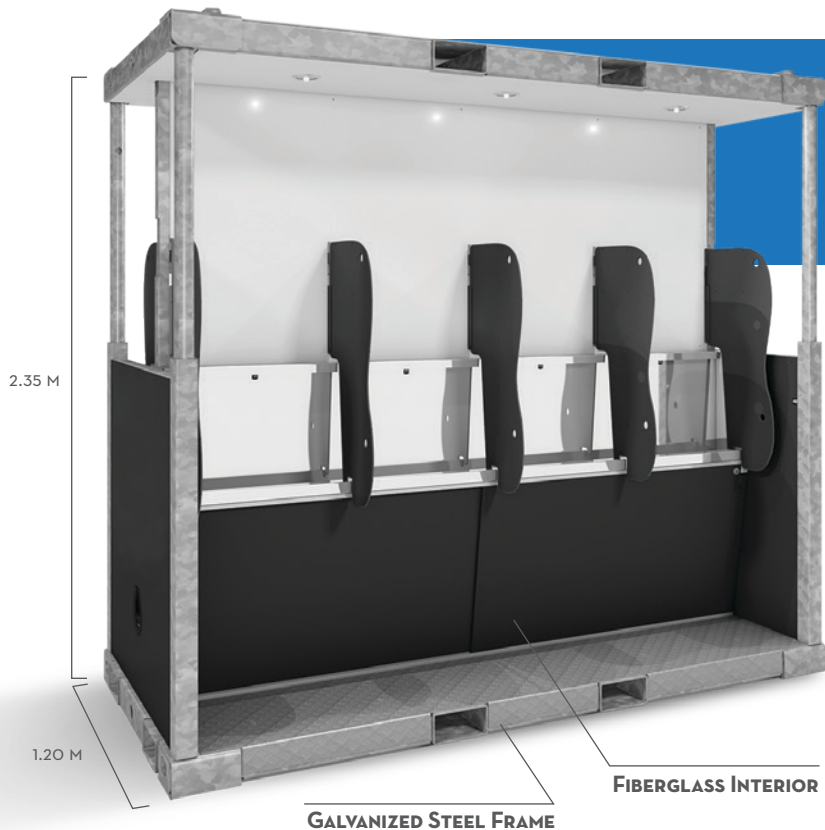


💡 LED LIGHTING

🚚 EASY TO TRANSPORT

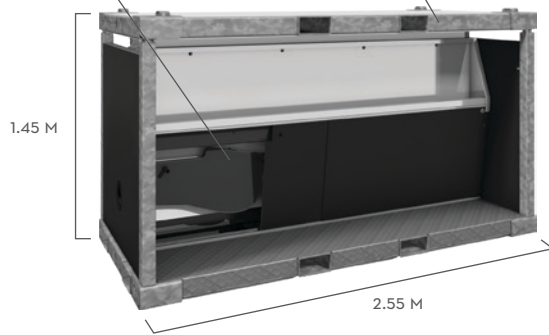
↔️ TWO-SIDED MODULE

# SANITRAX URINAL MODULE



PRIVACY SHEETS

MODULAR DESIGN



Satellite's Sanitrax Urinal is operational on both sides and equipped with water-saving smart-flushing technology. It collects urine in a reservoir out of sight and automatically keeps the troughs clean by regularly flushing fresh water through the system.

The urinals have built-in LED lighting, a luxurious finish, and an attractive design that stands out. In addition, standard privacy sheets are available to increase users' confidentiality. Combining all these factors makes Satellite's Sanitrax Urinal the most complete solution on the market.

## TECHNICAL SPECIFICATIONS

**WEIGHT:** 800 kg

**POWER:** 12V, 6W

**WATER USAGE:** Automatic

**WATER SUPPLY CONNECTION:** 3/4" M Camlock

**WASTE WATER DRAINAGE CONNECTION:** 2.5" M Camlock

**WASTE WATER SYSTEM:** Vacuum

**VACUUM PRESSURE IN BAR:** -0.3 to -0.6

**VACUUM PRESSURE IN PSI:** -4.3 to -8.7

**WATER PRESSURE IN BAR:** 3 to 5

**WATER PRESSURE IN PSI:** 40 to 90

**SHIPPING CONTAINER:** 10 modules

**TRANSPORT:** 24 modules (192 individual urinals) on a standard truck/trailer combination

 **TWO-SIDED MODULE**  **EASY TO CLEAN**  **EASY TO TRANSPORT**

# SANITRAX TECH MODULE

The Tech Module is the brain of the Satellite's Sanitrax system. The Sanitrax-designed electronic module has sensors that measure the connected toilets' vacuum levels and waste piping system and is fully autonomous.

Fitted with a twin pump setup, the Tech Module not only takes care of transporting the waste away from the toilets, but also the supply of fresh water for flushing.

Built to run autonomously, a dedicated app allows the operator to remotely monitor status and operations of the Tech Module when used in combination with an optional smart LED. In addition, data is stored on a cloud for later analysis by operators to ensure that the system is operating correctly.

## TECHNICAL SPECIFICATIONS

**WEIGHT:** 1,200 kg

**POWER:** 200/400/480V, 32/63AMP

**WATER SUPPLY CONNECTION:** 3/4" M Camlock

**WASTE WATER DRAINAGE CONNECTION:** 2.5" M Camlock

**WASTE WATER SYSTEM:** Vacuum

**VACUUM PRESSURE IN BAR:** -0.3 to -0.6

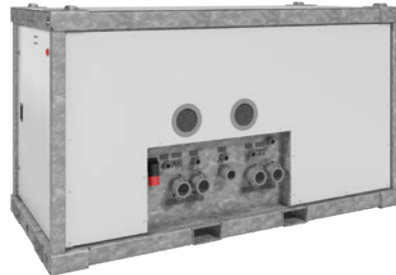
**VACUUM PRESSURE IN PSI:** -4.3 to -8.7

**WATER PRESSURE IN BAR:** 3 to 5

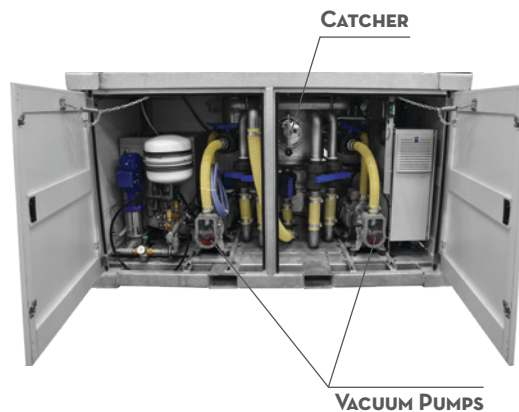
**WATER PRESSURE IN PSI:** 40 to 90

**SHIPPING CONTAINER:** 10 modules

**TRANSPORT:** 24 modules on a standard truck/trailer combination



HOSE TRAY



CATCHER

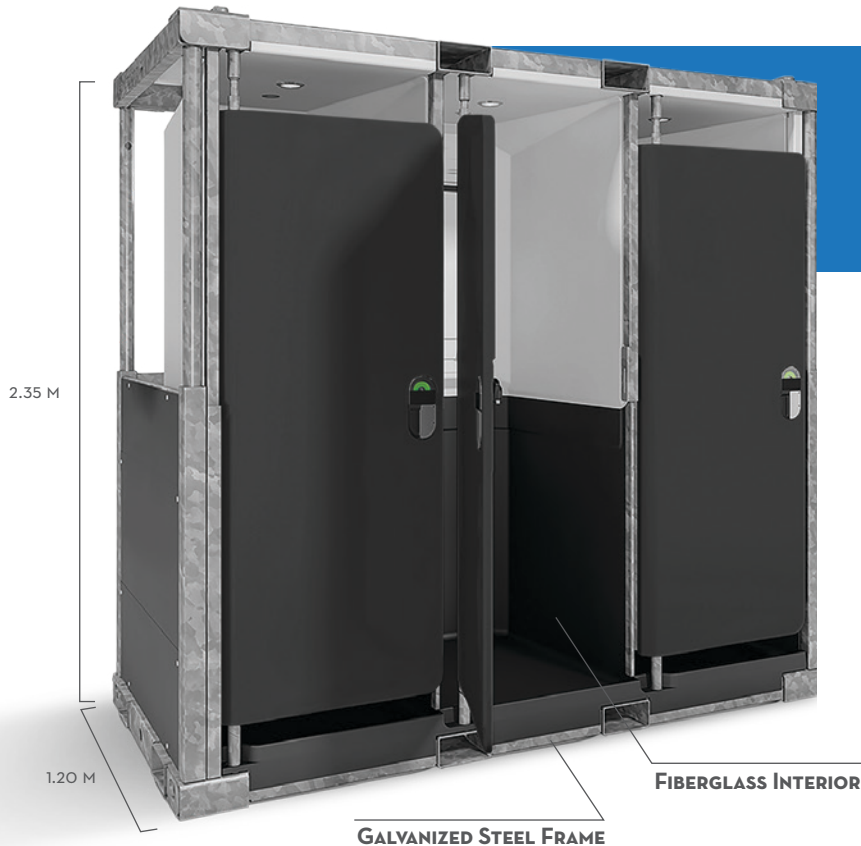
VACUUM PUMPS



COMPUTER



# SANITRAX SHOWER 1.0



The attractive, sturdy, and easy-to-use Satellite Sanitrax showers are ideal for natural disaster clean-up efforts, refugee camps, and campsites!

Satellite Sanitrax's sleek, spacious 1.0 shower provides complete privacy and sufficient LED light and ventilation. A module consists of three water-saving showers containing a cabinet for dry and safe clothing storage and valuables. In addition, Sanitrax's attractive design and luxurious finish stand out. Combining all these factors makes the Sanitrax Shower the complete solution on the market.

\*Hot water supply is not included and must be connected on-site.

## TECHNICAL SPECIFICATIONS

**WEIGHT:** 750 kg

**POWER:** 12V, 3W

**WATER SUPPLY CONNECTION:** 5/4" M Camlock

**WASTE WATER DRAINAGE CONNECTION:** 75 mm pipe

**WASTE WATER SYSTEM:** Gravity

**VACUUM PRESSURE IN BAR:** -0.3 to -0.6

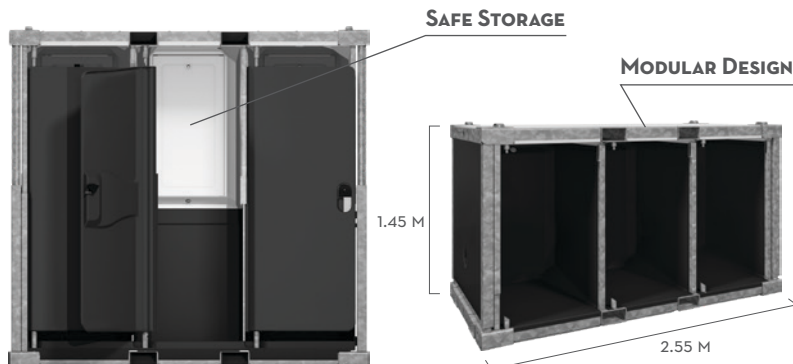
**VACUUM PRESSURE IN PSI:** -4.3 to -8.7

**WATER PRESSURE IN BAR:** 3 to 5

**WATER PRESSURE IN PSI:** 40 to 90

**SHIPPING CONTAINER:** 10 modules

**TRANSPORT:** 24 modules (72 showers) on a standard truck/trailer combination



 ENVIRONMENTALLY FRIENDLY  EASY TO CLEAN  EASY TO TRANSPORT

# SANITRAX SHOWER 2.0

Satellite's Sanitrax Shower 2.0 goes beyond standard sanitary facilities by bringing a clean, luxurious shower experience to the outdoors.

Each module comprises two spacious, attractively designed showers that provide complete privacy and sufficient LED light and ventilation. In addition, each stall has a water-saving shower head, a bench and a curtain that allows for dry and safe storage of clothing and valuables inside the stall itself.

\*Hot water supply is not included and must be connected on-site.

## TECHNICAL SPECIFICATIONS

**WEIGHT:** 750 kg

**POWER:** 12V, 2W

**WATER SUPPLY CONNECTION:** 5/4" M Camlock

**WASTE WATER SYSTEM:** Gravity, 50 mm

**VACUUM PRESSURE IN BAR:** -0.3 to -0.6

**VACUUM PRESSURE IN PSI:** -4.3 to -8.7

**WATER PRESSURE IN BAR:** 3 to 5

**WATER PRESSURE IN PSI:** 40 to 90

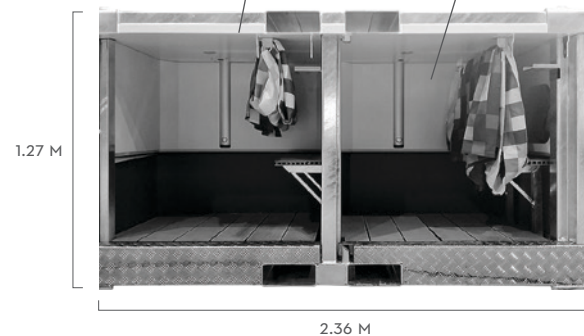
**SHIPPING CONTAINER:** 20 modules

**TRANSPORT:** 26 modules (52 showers) on a standard truck/trailer combination



**SPACE-SAVING MODULE**

**POWDER COATED INTERIOR**



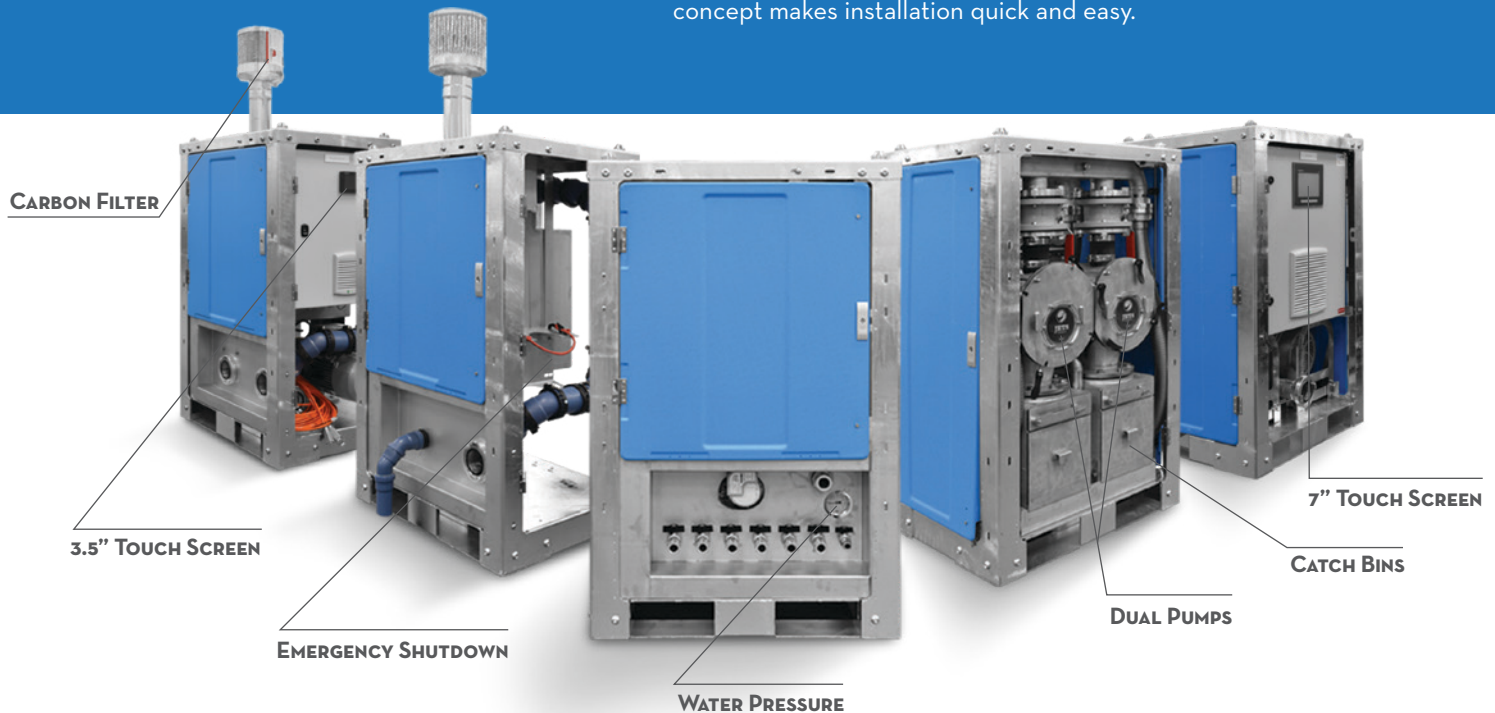
 LED LIGHTING

 EASY TO TRANSPORT

 QUICK TO DEPLOY AND SCALE

# NOMAD

Nomad is a scalable system consisting of five units designed to be combined to your specific need at any site - anywhere. The modular concept makes installation quick and easy.



## TRANSFER UNIT

The Transfer Tank Unit increases flexibility of the vacuum system. This unit allows you to set up the NOMAD system even far from drains.

## FLOW CONTROL UNIT

Ensures gravity flow to drain of up to:

- 3.75 l/sec to mains sewage
- 4.55 l/sec to mains sewage

## WATER SUPPLY UNIT

The Water Supply Unit distributes water for the toilets, urinals and vacuum stations. The unit provides category 5 protection of mains water supply.

## CATCHER UNIT

The Catcher Unit is designed to stop unwanted items from entering the pumps and eventually the sewer system. Easy clean out and service during operation.

## VACUUM UNIT

The Vacuum Unit creates vacuum, macerates sewage, and discharges waste. Available in 3 sizes (M/L/XL).

# ROVER

Rover is the ideal solution for operators looking to add vacuum-flushing units to their fleet or as a backup module for large-scale operations.

Rover module is the ideal plug & play unit to power everything, from smaller events and camping sites facilities to emergency and response operations.

Although it has one less pump as the Satellite's Sanitrax Tech module and no APP feature, that doesn't stop the Vacuumator™ pump from performing in high-demand situations. In addition, it is field-ready that can be quickly deployed to create a sanitary infrastructure in remote areas.



**TRAVEL MODE**



**WATER PUMP**



**PROTECTIVE TARP**



# NEW DIVISION OF SATELLITE INDUSTRIES

NEW  
DIVISION

scanvogn  
www.scanvogn.com

*“We are very excited that 2 leading companies in the mobile sanitation field in Europe come together, allowing us to soon be able to offer the same solutions throughout Europe as we have in our product portfolio in the US.”*

- Georges Köller,  
Managing Director of Satellite Industries  
for Europe, the Middle East & Africa

# ■ SCANVOGN

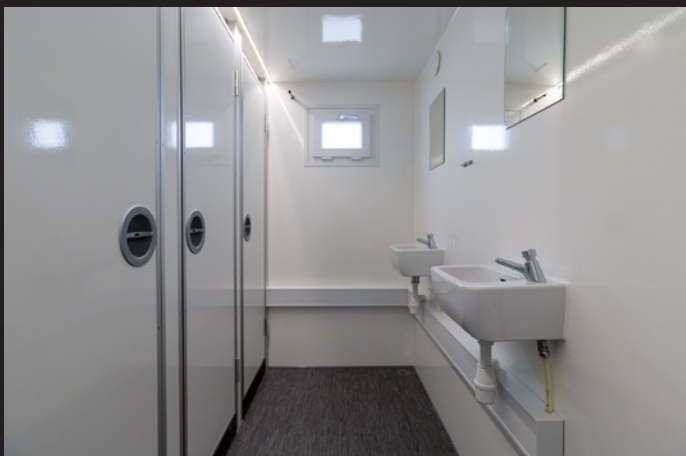
Scanvogn is Scandinavia's leading manufacturer of mobile solutions for the construction and events industry. Our core products consist of trailers for construction staff, accommodation, office work, eating, sanitation, decontamination, and custom solutions for organizations operating in remote areas lacking sanitary facilities.

Our products are known for their high quality and comfort. They are constructed using lightweight non-organic materials offering a high degree of insulation, hygiene, and durability. They are utilized in numerous parts of the world ranging from the hottest to the coldest climates.

Scanvogn is based in northern Denmark and employs 150 people in its 9000 m<sup>2</sup> factory. We produce most parts in-house, which enables us to deliver highly customized trailers and parts for customers with specific requirements.

With nearly 30 years of development and innovation Scanvogn has the experience and competence to turn our customers' ideas into functional solutions and produce them on a large scale.

*“As the newest division of Satellite Industries, Scanvogn’s customers globally will experience a more local presence. It marks a new and exciting chapter for us at Scanvogn and gives us the opportunity to expand and strengthen our position and continue our commitment and efforts to meet our customer’ needs and expectations.”*



# ■ SCANVOGN PRODUCTS INCLUDE

- **Mobile Sanitation Units**

These units consist of toilet trailers and toilet modules containing anywhere from 2 to 16 toilets. We are particularly well known for our vacuum solutions.

- **Mobile Shower Units**

These units are designed to help protect firefighters by allowing them to shower directly at the incident location thereby decreasing the exposure time to harmful contaminants.

- **Mobile Welfare Units**

These units are used on construction sites or other temporary workplaces, and typically include toilets, showers, a changing room, and a lunchroom.

- **Mobile Offices Units**

These units are equipped with office facilities allowing for a fully functional office space that can be moved as needed.

- **Mobile Accessible Units**

These units have more room space, offer increased accessibility, and include toilet supports, a one-hand faucet, and an easily accessible shower (optional).

- **Mobile Housing Units**

These units are designed to provide temporary housing solutions and come fully equipped with all necessary housing facilities. They are typically used at construction sites.

- **Customized Units**

In addition to standard units, Scanvogn also produces customized trailers.

*For more information, contact your local Sales Rep.*



scanvogn



## DEODORIZER DIVISION

PORTION CONTROL, LIQUID, BIO,  
FRAGRANCE BOOSTERS, HAND CARE, WATER TREATMENT,  
CLEANING PRODUCTS, ACCESSORIES





Regional Managers: 800-963-8121 | [www.satellitefresh.com](http://www.satellitefresh.com) | A product of Satellite Industries

**SAFE T FRESH**

**Quick-Scents PLUS**

Toilet Deodorizers

NSD

**SAFE T FRESH**

**STF**

Toilet Deodorizer

ADVANCED HYDROLYZING ENZYMES • 100% BIODEGRADABLE • 100% BIODEGRADABLE

Large Scale

Satellite Industries | 2030 Kenilworth Lane S. | Minneapolis, MN 55441-8800 | (1-800-883-1031)

**SAFE T FRESH**

**eco blue**

85 PACKETS

NSD

PATENTED MILDGROOD CONTROL TECHNOLOGY

BIODEGRADABLE

NEW TECHNOLOGY

BACTERIA FREE

Fast Disinfecting  
Fluorescent Yellow Dye  
Proven Performance  
High Heat and Heavy Traffic  
Long Lasting Fresh Fragrance

Model # 303

**Satellite**

Portion Control

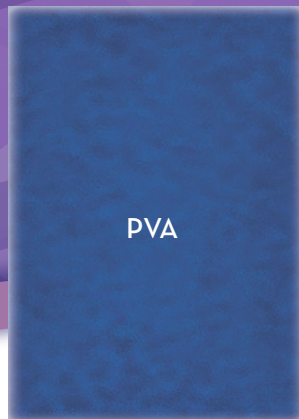
# QUICK SCENTS

Quick Scents packets are formulated to respond to changing levels of waste and temperatures based on the amount of active ingredients in each formula. Quick Scents Plus has higher levels of active ingredients and is a great solution for high heat, heavy traffic situations. For moderate conditions, use Quick Scents Regular, and if the weather cools down or you are doing same day service for a special event, use Quick Scents Event.

Deep-Blue Dye  
Drop-N-Go  
Non-Formaldehyde  
No Mixing



QUICK SCENTS



PVA

**REGULAR**



**EVENT**



**PLUS**



**ALL SEASON**

**MIX**

1 PACKET PER 19 L WATER

**DAILY**

**MIX**

1 PACKET PER 19 L WATER

**EXTREME HEAT**

**MIX**

1 PACKET PER 19 L WATER

**AVAILABLE SIZES**  
(QS REGULAR, EVENT, PLUS)

**AVAILABLE FRAGRANCES**  
(QS REGULAR, EVENT, PLUS)

BUBBLE GUM



255/CASE (3 BAGS OF 85)

Portion Control

# QUICK BLUE

Safe-T-Fresh has created Quick Blue, the first dual-film effervescent packet! This extraordinary, patent-pending process uses a paper film on one side and PVA film on the other. The result is a packet that dissolves quickly and is dispersed throughout the tank by an effervescent action. And it works in salt water!

Deep-Blue Dye  
Drop-N-Go  
Non-Formaldehyde  
No Mixing



PVA



PAPER



QUICK BLUE

SUMMER

WINTER  
& EVENT



HIGH TRAFFIC

COOL | DAILY

MIX

MIX

1 PACKET PER 19 L WATER

1 PACKET PER 19 L WATER

AVAILABLE SIZES  
(QB WINTER & SUMMER)

AVAILABLE FRAGRANCES  
(QB WINTER & SUMMER)

BUBBLE GUM



255/CASE (3 BAGS OF 85)

## Liquid & Portion Control

# BIO

The benefits of using Safe-T-Fresh Bio products go well beyond odor control and protecting the environment, eliminating waste build-up in tanks, hoses and pipes. The natural bacteria, when left in a tank or system, multiply over time and increase in effectiveness, breaking down solids into a sludge. Your tanks, hoses and pipes will no longer have hardened waste that produces continual odor. Moreover, waste treatment plants will benefit from the added natural bacteria, which helps you obtain or maintain your current dump permits or reduce your fees.

Bio deodorizers are available in packet and liquid form. Use the Quick Scents Bio 30 gram packets for moderate levels of traffic and heat and the Bio 60 gram for high heat and traffic. For liquids, use Safe-T-Fresh Bio 5K for extreme conditions.



5K



30g



60g



**SUPER CONCENTRATED**

**LIGHT - MODERATE**

**MODERATE - HEAVY**

**MIX**

**MIX**

**MIX**

30-60 ML PER 19 L WATER

1 PACKET PER 19 L WATER

1 PACKET PER 19 L WATER

**AVAILABLE SIZES**  
(BIO 5K)

**AVAILABLE FRAGRANCES**  
(BIO 5K)

**AVAILABLE SIZES**  
(BIO 30 G & 60 G)

**AVAILABLE FRAGRANCES**  
(BIO 30 G & 60 G)

BUBBLE GUM

BUBBLE GUM



3.8 L



23 L



208 L



30 G - 400/CASE (5 BAGS OF 80)  
60 G - 200/CASE (5 BAGS OF 40)

Most Environmentally-Friendly Portion Control

# ECO BLUE

Announcing Eco Blue! The MOST eco-friendly deodorizer to hit the market, from Safe-T-Fresh. A revolutionary new packet product with no hazardous materials that doesn't sacrifice fragrance or deep blue color. Ground breaking, patented malodor control technology eliminates the chemical process most current deodorizers use by naturally absorbing malodors. Eco Blue is biocide and bacteria free making it fully biodegradable and treatment plant friendly. Safe-T-Fresh's new Eco Blue, will provide a worry free week of service and refreshing lavender or bubble gum scent, at any temperature.

Wow your customers and protect the environment. Try Eco Blue today!

Fast Dissolving  
Long-Lasting Fresh Fragrance  
High Heat and Heavy Traffic  
New Non-Staining Dye  
Proven Performance



PLUS



## EXTREME HEAT

MIX

1 PACKET PER 19 L WATER

### AVAILABLE FRAGRANCES

LAVENDER

BUBBLE GUM

### AVAILABLE SIZES



255/CASE

## Liquid Deodorizers

# STF

Many operators may not remember that Safe-T-Fresh was the very first environmentally safe deodorizer developed for the portable sanitation industry in 1970. Even then, Satellite was aware that protecting the environment was everyone's responsibility for the sake of future generations.

Today, Safe-T-Fresh is reformulated with the most advanced ingredients for fighting odors. Through research, testing and field observation, we've created a deodorizer that actually changes odor molecules instead of masking them. This revolutionary breakthrough in molecular technology continues the tradition of being environmentally safe, while delivering a much higher level of odor control. It is available in a variety of concentrations which allows you to choose what's best for your situation.

Superior Odor Control  
Environmentally Safe  
Non-Formaldehyde  
Deep-Blue Dye





**READY-TO-USE**

**MIX**

60-120 ML PER 19 L WATER



**CONCENTRATED**

**MIX**

30-90 ML PER 19 L WATER



**SUPER CONCENTRATED**

**MIX**

15-60 ML PER 19 L WATER



**EXTREME CONCENTRATE**

**MIX**

15-30 ML PER 19 L WATER

**AVAILABLE SIZES  
(ALL STF)**



1 L



3.8 L



23 L



208 L



1041 L

**AVAILABLE FRAGRANCES  
(ALL STF)**

LONGER LEAD TIMES:

LEMON
LAVENDER
CHERRY
BUBBLE GUM

HOT CINNAMON
COCONUT CREAM
FRESH & CLEAN
MULBERRY
RAZZLE BERRY

Long-Lasting Freshness

# FRAGRANCE BOOSTERS

When customers begin to notice a strong odor in your restrooms, they may stop using your services. To insure they have a pleasant experience, use fragrance boosters from Safe-T-Fresh. It only takes a moment and a few cents to improve your image and keep customers happy.



## MASK STRONG ODORS

### URINAL BLOCKS

High quality and slow dissolving, the urinal blocks stay solid. They will also bring a pleasant and powerful perfume. Free of paradichlorobenzene. Last 6 to 7 days.

### AVAILABLE FRAGRANCES

LEMON

### AVAILABLE SIZES



320/CASE

## EASY-TO-USE

### BANDIT

The Bandit scent band is a powerful fragrance booster that freshens the air and neutralizes odors. Its unique self-locking design allows it to be secured to vent pipes and under sinks. Lasts 60 to 90 days.

### AVAILABLE FRAGRANCES

LAVENDER

CUCUMBER MELON

### AVAILABLE SIZES



96/CASE



## LONGEST LASTING

### CABANA SPRAY

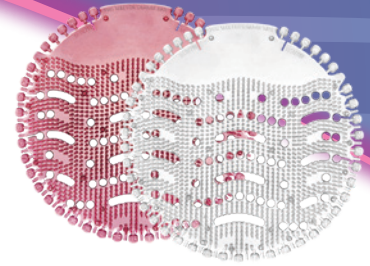
Safe-T-Fresh cabana sprays will exceed your expectations for their full, fresh fragrance and longevity. This product is a must for those who want fresh smelling restrooms!



## LONG LASTING

### AIR WORKS

Air Works deodorizer discs are a pleasant addition to the fragrance used in your waste tank. One disc per service.



## FRESHENS & REDUCES SPLASH

### URINAL SCREENS

Freshen your urinals with our large, bright urinal screens. The screens help reduce splashing, mask odors and provide a burst of fresh scents with each application.

#### AVAILABLE FRAGRANCES (CABANA SPRAY & AIR WORKS)

MULBERRY  
BUBBLE GUM

LEMON

LAVENDER  
RAZZLE BERRY

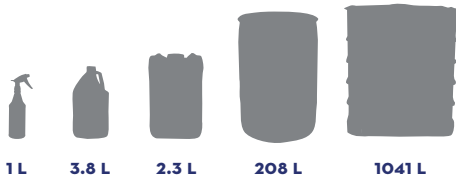
COCONUT CREAM  
CHERRY

#### AVAILABLE FRAGRANCES

LAVENDER

CUCUMBER MELON

#### AVAILABLE SIZES



1L    3.8 L    2.3 L    208 L    1041 L

#### AVAILABLE SIZES



300/CASE

#### AVAILABLE SIZES



12/CASE    72/CASE

Soothing Soaps and Sanitizers

# HAND CARE

Both our liquid and foaming hand soaps and sanitizers provide an economical way to maintain your restrooms, handwash stations and sanitizer stands. Our soaps contain soothing aloe that moisturize hands with each use. Refills are available in either 800 or 1000 ml sizes.

For outfits that require a bit more, bulk solutions are available in two different types of soap and an FDA approved hand sanitizer. Satellite's 800 ml refillable bottle makes servicing quick and easy when using Satellite's bulk solutions. See how you can save money, increase revenue and speed up service time when buying bulk.



## FOAM SOAP & SANITIZER

### OPTIONS

1 L FOAMING SOAP

1 L FOAMING SANITIZER

### AVAILABLE SIZES (SOAP & SANITIZER)



6/CASE



## BULK SOAP

### OPTIONS

### AVAILABLE SIZES



10 L



## BULK HAND SANITIZER

### OPTIONS

GEL - 65% ALCOHOL  
 FLUID - 80% ALCOHOL

### AVAILABLE SIZES



5 L



20 L



200 L



## DISPENSERS

### OPTIONS

BULK REFILLABLE  
 1 L FOAMING

Industry's Strongest & Safest

# CLEANING PRODUCTS



## ALL PURPOSE CLEANER

Make quick work of grease and grime in those hard to reach places with Safe-T-Fresh's All Purpose Cleaner. Perfect for the job-site or in the yard, this heavy-duty cleaner does it all.



## URINAL CLEANER

Safe-T-Fresh's Urinal Cleaner's high-powered formula cleans off grease, adhesives, carbon-based soils, and masonry. Safe to use on metal, painted metal, and plastic.

The cleanliness and condition of your trucks, restrooms and trailers will determine how customers view your business. Use Safe-T-Fresh products to shine and polish your equipment, giving customers a reason to trust you offer the best service in the business.

## AVAILABLE SIZES

(TOILET WASHDOWN, ALL PURPOSE CLEANER, URINAL CLEANER, DELIMER)



1 L



3.8 L



25 L



### TOILET WASHDOWN

Keep your restrooms looking clean and sharp with Safe-T-Fresh's Toilet Washdown. Available in multiple fragrances for long-lasting freshness that your customers will enjoy.

#### AVAILABLE FRAGRANCES (TOILET WASHDOWN)

HOT CINNAMON	RAZZLE BERRY
BUBBLE GUM	MULBERRY
FRESH & CLEAN	LAVENDER
LEMON	COCONUT CREAM
CHERRY	CUCUMBER MELON



### TRUCK WASH

Satellite knows how important making a good impression is and that it all starts with curb appeal. That is why our heavy-duty Truck Wash removes road film, grease and deposits. Keep your trucks and trailers looking like new with Satellite's Truck Wash.

#### AVAILABLE SIZES



23 L



### GRAFFIX/QUICKFIX

Graffix and QuickFix are environmentally safe liquid gels used to remove unwanted graffiti from HDPE, wood, brick, stone or metal. Does not contain MEK or other harsh, flammable chemicals. Gel is formulated to adhere to vertical surfaces without running.

#### AVAILABLE SIZES



1 L 3.8 L 23 L

Every Thing You Need to Succeed

# ACCESSORIES



## SPONGES

Safe-T-Fresh offers heavy-duty sponges that work great to clean grease, grime, and graffiti off of portable restrooms. Safe-T-Fresh sponges can be used with a variety of Safe-T-Fresh products.



## TOOLS

Safe-T-Fresh has all the tools needed to get the job done. With a variety of sizes in every tool, it's safe to say you will find what you need when you shop Safe-T-Fresh.



### EXHAUST VAPORIZER SCENT

Exhaust Vaporizer Scent uses a uniquely formulated essential oil to neutralize exhaust odors within a specially designed evaporation chamber. In the chamber, the essential oil is activated and vaporized by the heat of the pump's exhaust.



### ANTI-FREEZING CONCENTRATE

The Antifreeze is an additive to use with the Safe-T-Fresh toilet fluids or sachets to prevent your tank from freezing. The antifreeze, less corrosive than salt, is a concentrate that has proven its efficiency at lowest

temperatures. Moreover, after pouring the product into your toilet tank you will find how easy it is to mix this product.

The quantity of Antifreeze to mix with water varies with temperatures.

### USE AS SUPPLIED FOR TEMPERATURES OF DOWN TO -40C

*\*Washing hands in freezing temperatures can cause your hands to cool rapidly. Limit the time your hands are exposed to freezing temperatures and cold water to avoid risk of frost bite.*

### AVAILABLE SIZES



23 L

### AVAILABLE SIZES



200 L

1000 L

### MIX RATIO

FOR TEMPERATURES OF DOWN TO -20 C

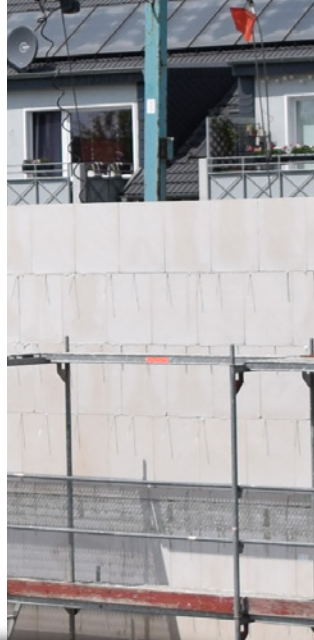
1 PART WATER TO 2 PARTS ANTIFREEZE

FOR TEMPERATURES OF DOWN TO -15 C

1 PART WATER TO 1 PART ANTIFREEZE

FOR TEMPERATURES OF DOWN TO -10 C

2 PARTS WATER TO 1 PART ANTIFREEZE



SERVICE UNITS





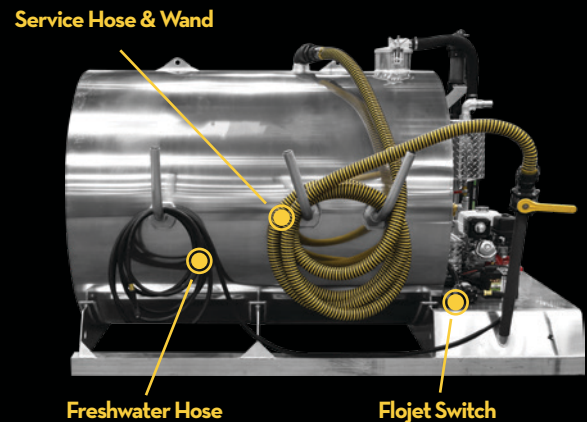
SMALL TANKS FOR BIG JOBS

# SERVICES UNITS



## SERVICE UNITS

Satellite service units are easy to operate and to maintain. Logical and worry-free operation means more efficiency when operating the service unit, and less time lost when training a new operator. Easy to reach components make daily maintenance effortless. Using the accumulated knowledge from our users we have added some practical features such as a 1.5" (DN40) bucket-fill and practical hose hooks for you to work in an efficient and easy way.





# MAL225

The MAL225 is the smallest service unit in our range. Thanks to its compact dimensions, this module fits directly in the back of most modern pickup trucks, enabling the operator to enter height-restricted areas such as garages.

The unique and standard Easy-Fix mounting system guarantees fast and safe assembly without the need for extensive engineering work.

## CONSTRUCTION

- ✓ Tank-in-tank, 2 chambers
- ✓ 2 Zinc anodes
- ✓ Easy-Fix mounting system

## STANDARD FEATURES

- ✓ Primary Ball Valve
- ✓ Manhole 8"
- ✓ Secondary Ball Valve with drain
- ✓ Oil separator with drain
- ✓ Heavy duty UV-resistant hoses
- ✓ 12V Battery
- ✓ External oil tank for vacuum pump
- ✓ 2 Sight glasses for waste water level
- ✓ 3" Waste inlet (with 2" connector)
- ✓ Sight tube for fresh water level
- ✓ 1<sup>1/4</sup>" Bucket-fill
- ✓ 3" waste outlet with 3" Camlock coupler (male)
- ✓ Dump hose: 3 m x 3" with Camlock coupler

## OPTIONS

- ✓ Suction hose: Tigertail 2" - lengths: 7.6 m, 9.1 m, 12.2 m, 15.2 m, 18.3 m
- ✓ Vaporizer to eliminate odours



## SPECIFICATIONS

TOTAL VOLUME	825 L
WASTE CAPACITY	600 L
CLEAN WATER CAPACITY	225 L
DRY WEIGHT* (FROM)	± 330 KG
FULL WEIGHT	± 930 KG
MATERIAL	ALUMINUM 5454 WITH ANTI-CORROSION COATING
ENGINE	GASOLINE ENGINE 5.5 HP ELECTRIC START
VACUUM PUMP	MASPORT HXL2V 1730 L/MIN
DIMENSIONS (L X W X H)	1980 X 1000 X 950 MM
IDEAL VEHICLE	PICKUP OR SMALL TRAILER
DRIVING LICENSE	B
NUMBER OF TOILETS CLEANED PER DAY	15
OTHER VERSIONS	AVAILABLE WITH A LOW-PRESSURE OR HIGH -PRESSURE WATER SYSTEM.

\*Dry weight is based on calculation of all components separately. They may vary depending on the service unit.

# MAL250

The MAL250's affordability makes it ideal for start-ups or as an additional unit for your existing fleet. A dry weight of just 260 kg, the lowest in this segment, and compact dimensions allow the MAL250 to be used within technical and legal limits, and to be installed on a wider range of pickups and flatbed trucks.

## CONSTRUCTION

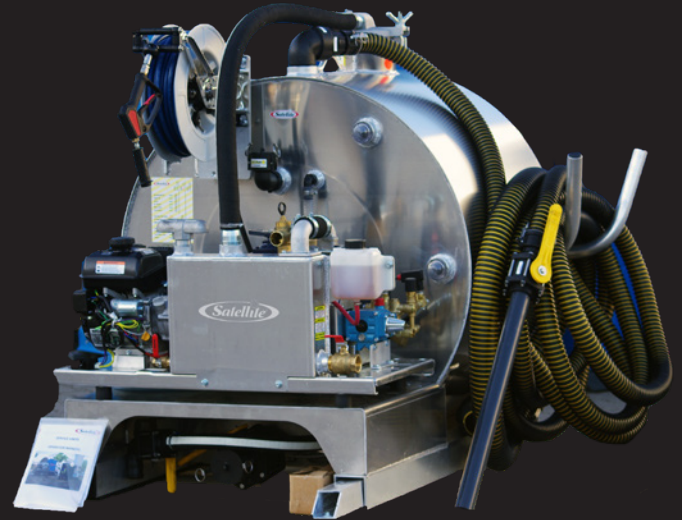
- ✓ Tank-in-tank, 2 chambers
- ✓ 2 Zinc anodes
- ✓ Easy-Fix mounting system

## STANDARD FEATURES

- ✓ Primary Ball Valve
- ✓ Manhole 8"
- ✓ Secondary Ball Valve with drain
- ✓ Oil separator with drain
- ✓ Heavy duty UV-resistant hoses
- ✓ 12V Battery
- ✓ External oil tank for vacuum pump
- ✓ 2 Sight glasses for waste water level
- ✓ 3" Waste inlet (with 2" connector)
- ✓ Sight tube for fresh water level
- ✓ 1<sup>1/4</sup>" Bucket-fill
- ✓ 3" waste outlet with 3" Camlock coupler (male)
- ✓ Dump hose: 3 m x 3" with Camlock coupler

## OPTIONS

- ✓ Suction hose: Tigertail 2" - lengths: 7.6 m, 9.1 m, 12.2 m, 15.2 m, 18.3 m
- ✓ Vaporizer to eliminate odours



## SPECIFICATIONS

TOTAL VOLUME	950 L
WASTE CAPACITY	700 L
CLEAN WATER CAPACITY	250 L
DRY WEIGHT* (FROM)	260 KG
MATERIAL	ALUMINUM 5454 WITH ANTI-CORROSION COATING
ENGINE	GASOLINE ENGINE 5.5 HP ELECTRIC START
VACUUM PUMP	MASPORT HXL3V 1730 L/MIN
DIMENSIONS (L X W X H)	1446 X 1500 X 1464 MM
FOOTPRINT DIMENSIONS (L X W)	1446 X 1000 MM
IDEAL VEHICLE	≥ 3.5T
DRIVING LICENSE	B
NUMBER OF TOILETS CLEANED PER DAY	15
OTHER VERSIONS	AVAILABLE WITH A LOW-PRESSURE OR HIGH-PRESSURE WATER SYSTEM.

\*Dry weight is based on calculation of all components separately. They may vary depending on the service unit.

# MAL300

The MAL300 is the ideal service unit for those who want to adapt an existing delivery (or flatbed) truck or trailer for maintenance work. Weighing less than 1000 kg when fully loaded, it can be fitted to virtually any truck up to 3.5 t without going over legal limits. Offering greater flexibility to any fleet, and suitable for use by drivers holding a B license, the MAL300 is the best choice on the market as an entry-level service unit.

## CONSTRUCTION

- ✓ Tank-in-tank, 2 chambers
- ✓ 2 Zinc anodes
- ✓ Easy-Fix mounting system

## STANDARD FEATURES

- ✓ Primary Ball Valve
- ✓ Manhole 8"
- ✓ Secondary Ball Valve with drain
- ✓ Oil separator with drain
- ✓ Heavy duty UV-resistant hoses
- ✓ 12V Battery
- ✓ External oil tank for vacuum pump
- ✓ 2 Sight glasses for waste water level
- ✓ 3" Waste inlet (with 2" connector)
- ✓ Sight tube for fresh water level
- ✓ 1/4" Bucket-fill
- ✓ 3" waste outlet with 3" Camlock coupler (male)
- ✓ Dump hose: 3 m x 3" with Camlock coupler

## OPTIONS

- ✓ Suction hose: Tigertail 2" - lengths: 7.6 m, 9.1 m, 12.2 m, 15.2 m, 18.3 m
- ✓ Vaporizer to eliminate odours



## SPECIFICATIONS

TOTAL VOLUME	1130 L
WASTE CAPACITY	750 L
CLEAN WATER CAPACITY	380 L
DRY WEIGHT* (FROM)	280 KG
MATERIAL	ALUMINUM 5454 WITH ANTI-CORROSION COATING
ENGINE	GASOLINE ENGINE 5.5 HP ELECTRIC START
VACUUM PUMP	MASPORT HXL2V 1730 L/MIN
DIMENSIONS (L X W X H)	1400 X 1710 X 1500 MM
FOOTPRINT DIMENSIONS (L X W)	1500 X 1800 MM
IDEAL VEHICLE	≥ 2.8 T
DRIVING LICENSE	B
NUMBER OF TOILETS CLEANED PER DAY	20
OTHER VERSIONS	AVAILABLE WITH A LOW-PRESSURE OR HIGH-PRESSURE WATER SYSTEM.

\*Dry weight is based on calculation of all components separately. They may vary depending on the service unit.

# MAL450

Looking for a service unit that offers enough volume for a larger daily route, and still maintains a low weight? The MAL450 offers the best weight/volume ratio on the market. With dry weights from as little as 340 kg and offering a total volume of 1700 litres (1150 waste/550 fresh) it can be mounted on virtually all small trucks.

The MAL450 can be delivered with a reliable gasoline engine or with a hydraulic drive.

## CONSTRUCTION

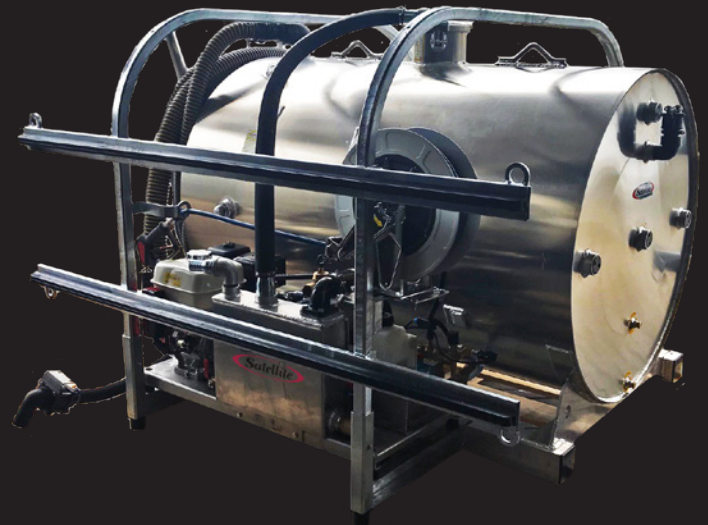
- ✓ Tank-in-tank, 2 chambers
- ✓ 2 Zinc anodes
- ✓ Easy-Fix mounting system

## STANDARD FEATURES

- ✓ Primary Ball Valve
- ✓ Manhole 8"
- ✓ Secondary Ball Valve with drain
- ✓ Oil separator with drain
- ✓ Heavy duty UV-resistant hoses
- ✓ 12V Battery
- ✓ External oil tank for vacuum pump
- ✓ 2 Sight glasses for waste water level
- ✓ 3" Waste inlet (with 2" connector)
- ✓ Sight tube for fresh water level
- ✓ 1<sup>1/4</sup>" Bucket-fill
- ✓ 3" waste outlet with 3" Camlock coupler (male)
- ✓ Dump hose: 3 m x 3" with Camlock coupler

## OPTIONS

- ✓ Suction hose: Tigertail 2" - lengths: 7.6m, 9.1 m, 12.2 m, 15.2 m, 18.3 m
- ✓ Vaporizer to eliminate odours
- ✓ Hydraulic drive available
- ✓ Cabin lashing bars



## SPECIFICATIONS

TOTAL VOLUME	1700 L
WASTE CAPACITY	1150 L
CLEAN WATER CAPACITY	550 L
DRY WEIGHT* (FROM)	340 KG
MATERIAL	ALUMINUM 5454 WITH ANTI-CORROSION COATING
ENGINE	GASOLINE ENGINE 9.0 HP ELECTRIC START
VACUUM PUMP	MASPORT HXL3V 2600 L/MIN
DIMENSIONS (L X W X H)	1980 X 1710 X 1500 MM
FOOTPRINT DIMENSIONS (L X W)	2080 X 1800 MM
IDEAL VEHICLE	≥ 3.5 T
DRIVING LICENSE	B
NUMBER OF TOILETS CLEANED PER DAY	30
OTHER VERSIONS	AVAILABLE WITH A LOW-PRESSURE OR HIGH-PRESSURE WATER SYSTEM.

\*Dry weight is based on calculation of all components separately. They may vary depending on the service unit.

# MAL650

With its large wastewater capacity reaching 1600 l, the MAL650 is aimed at operators who need extra volume for their daily routes and can also come in handy at events.

The MAL650 is designed to be mounted on a truck weighing over 3.5 t and can be supplied with either a gasoline engine or hydraulic drive.

## CONSTRUCTION

- ✓ Tank-in-tank, 2 chambers
- ✓ 2 Zinc anodes
- ✓ Easy-Fix mounting system

## STANDARD FEATURES

- ✓ Primary Ball Valve
- ✓ Manhole 8"
- ✓ Secondary Ball Valve with drain
- ✓ Oil separator with drain
- ✓ Heavy duty UV-resistant hoses
- ✓ 12V Battery
- ✓ External oil tank for vacuum pump
- ✓ 2 Sight glasses for waste water level
- ✓ 3" Waste inlet (with 2" connector)
- ✓ Sight tube for fresh water level
- ✓ 1/4" Bucket-fill
- ✓ 3" waste outlet with 3" Camlock coupler (male)
- ✓ Dump hose: 3 m x 3" with Camlock coupler

## OPTIONS

- ✓ Suction hose: Tigertail 2" - lengths: 7.6 m, 9.1 m, 12.2 m, 15.2 m, 18.3 m
- ✓ Vaporizer to eliminate odours
- ✓ Masport HXL3 3200 L/min
- ✓ Hydraulic drive available
- ✓ Cabin lashing bars



## SPECIFICATIONS

TOTAL VOLUME	2450 L
WASTE CAPACITY	1600 L
CLEAN WATER CAPACITY	850 L
DRY WEIGHT* (FROM)	460 KG
MATERIAL	ALUMINUM 5454 WITH ANTI-CORROSION COATING
ENGINE	GASOLINE ENGINE 5.5 HP ELECTRIC START
VACUUM PUMP	MASPORT HXL3V 2600 L/MIN
DIMENSIONS (L X W X H)	2250 X 1850 X 1750 MM
FOOTPRINT DIMENSIONS (L X W)	2350 X 1950 MM
IDEAL VEHICLE	≥ 5.5 T
DRIVING LICENSE	C1
NUMBER OF TOILETS CLEANED PER DAY	40
OTHER VERSIONS	AVAILABLE WITH A LOW-PRESSURE OR HIGH-PRESSURE WATER SYSTEM.

\*Dry weight is based on calculation of all components separately. They may vary depending on the service unit.

## MGA925

Engineered to meet high-volume requirements, the MGA925 is the ideal unit for operators who need to clean more than 35 toilets a day, and for the most demanding circumstances where a high volume of fresh water is needed.

The MGA925 can be adapted to almost any customer request. It serves as the basis for customized vehicle bodies according to their wishes. It can be used with our specially adapted powerpacks as well as a PTO.

### CONSTRUCTION

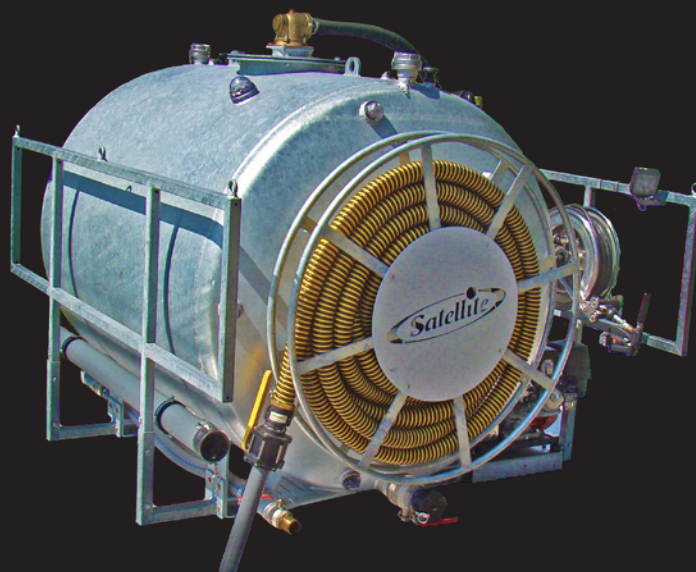
- ✓ Type 3 chambers
- ✓ Manual reel for suction hose storage

### STANDARD FEATURES

- ✓ Primary Ball Valve
- ✓ Manhole 8"
- ✓ Secondary Ball Valve with drain
- ✓ Oil separator with drain
- ✓ Heavy duty UV-resistant hoses
- ✓ 12V Battery
- ✓ External oil tank for vacuum pump
- ✓ 2 Sight glasses for waste water level
- ✓ 3" Waste inlet (with 2" connector)
- ✓ Sight tube for fresh water level
- ✓ 1<sup>1/4</sup>" Bucket-fill
- ✓ 3" waste outlet with 3" Camlock coupler (male)
- ✓ Dump hose: 3 m x 3" with Camlock coupler

### OPTIONS

- ✓ Suction hose: Tigertail 2" - lengths: 7.6 m, 9.1 m, 12.2 m, 15.2 m, 18.3 m
- ✓ Vaporizer to eliminate odours
- ✓ Cabin lashing bars



### SPECIFICATIONS

TOTAL VOLUME	3500 L
WASTE CAPACITY	2300 L
CLEAN WATER CAPACITY	1200 L
DRY WEIGHT* (FROM)	900 KG
MATERIAL	GALVANIZED STEEL
ENGINE	GASOLINE ENGINE 5.5 HP ELECTRIC START
VACUUM PUMP	MASPORT HXL3V 5000 L/MIN
DIMENSIONS (L X W X H)	2000 X 2300 X 1850 MM
FOOTPRINT DIMENSIONS (L X W)	2080 X 1800 MM
IDEAL VEHICLE	≥ 7.49 T
DRIVING LICENSE	C
NUMBER OF TOILETS CLEANED PER DAY	50
OTHER VERSIONS	AVAILABLE WITH A STANDARD HIGH-PRESSURE WATER SYSTEM ONLY.

\*Dry weight is based on calculation of all components separately. They may vary depending on the service unit.

# CUSTOM-MADE UNITS





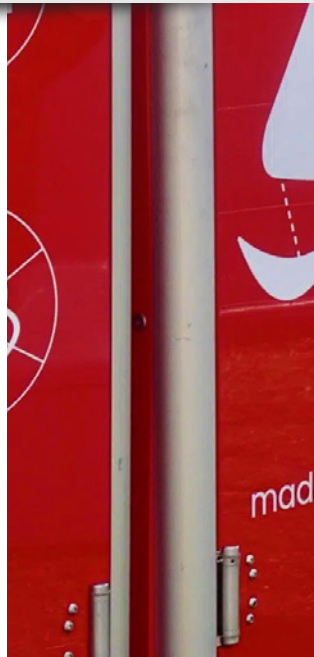
LOOKING FOR  
SOMETHING  
DIFFERENT?

*We can accommodate  
your wishes.*





  
madame **Pee**  
**MADAMEPEE**



noire  
féminin



amePee



l'urinoire  
au féminin



madamePee

PEACOCK SOCIETY FREENOW

Rentrez du festival  
en VTC!

2x50% offerts\*

PEACOCK21



l'urinoire  
au féminin



madamePee



l'urinoire  
au féminin



madamePee



l'urinoire  
au féminin



madamePee

PEACOCK SOCIETY FREENOW

Rentrez du festival  
en VTC!

2x50% offerts\*

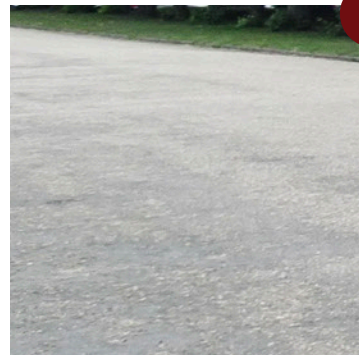
PEACOCK21



# EASY TO HANDLE

---

- 1 Handling with forklift, handles for manual movement on the ground
- 2 Pumped drainage or sewage system
- 3 Euro-pallet format, standard transport
- 4 Patented bowl with anti-odor valve



## **Minimum space requirement (folded roof):**

W 80 cm D 120 cm H 210 cm - Weight 75.6 kg

**Handling system:** Forklift / Hand pallet truck  
Handles to move manually

**Tank Capacity:** 200 L

## ELEVATE THE EXPERIENCE AT EVENTS

Toilets have become inherent of the full event experience. Long waiting lines and sanitation facilities that do not meet hygiene expectations can leave visitors with a bitter taste.

Transform the experience with urinals dedicated for women. Added to men urinals and classic toilets, no one is left out! Specific toilets areas are created, helping with the flow and making everyone feeling safe and cared for.



## Contact us



[contact@madamepee.com](mailto:contact@madamepee.com)



[www.madamepee.com](http://www.madamepee.com)



2 Place de la Porte de Versailles  
75015 PARIS  
FRANCE

## EVENTPEE

**A PORTABLE URINAL FOR WOMEN  
AND MEN FOR OUTDOOR EVENTS**





## A THOUGHT-OUT DESIGN

---



**INTIMATE** - Create toilets areas for all and improve safety

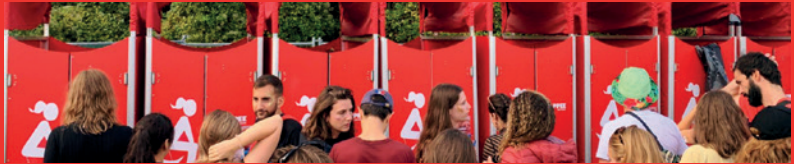


**FAST** - Reduce queues at toilets for women



**HYGIENIC** - Whole cabin is no-touch, equipped with sanitizer

## MADAMEPEE URINAL FOR WOMEN



“I enjoy festivals again thanks to those toilets”

“So convinient and hygienic, it’s about time this existed!”

## EASY TO OPERATE

---



**Compact & connectable in series**



**Self-contained or plugged**



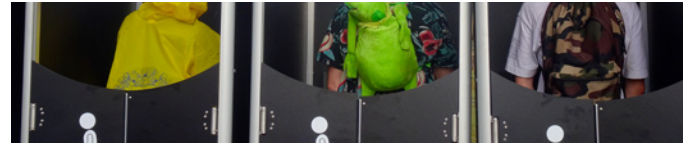
**No water and no electricity**



# MISTERPEE

## INTIMATE URINAL FOR MEN

A portable urinal for men, ideal for events. It combines privacy, hygiene and the preservation of natural resources. Like the ma-damePee urinal, it operates without water, for more responsible sanitary areas that are equitable between men and women.







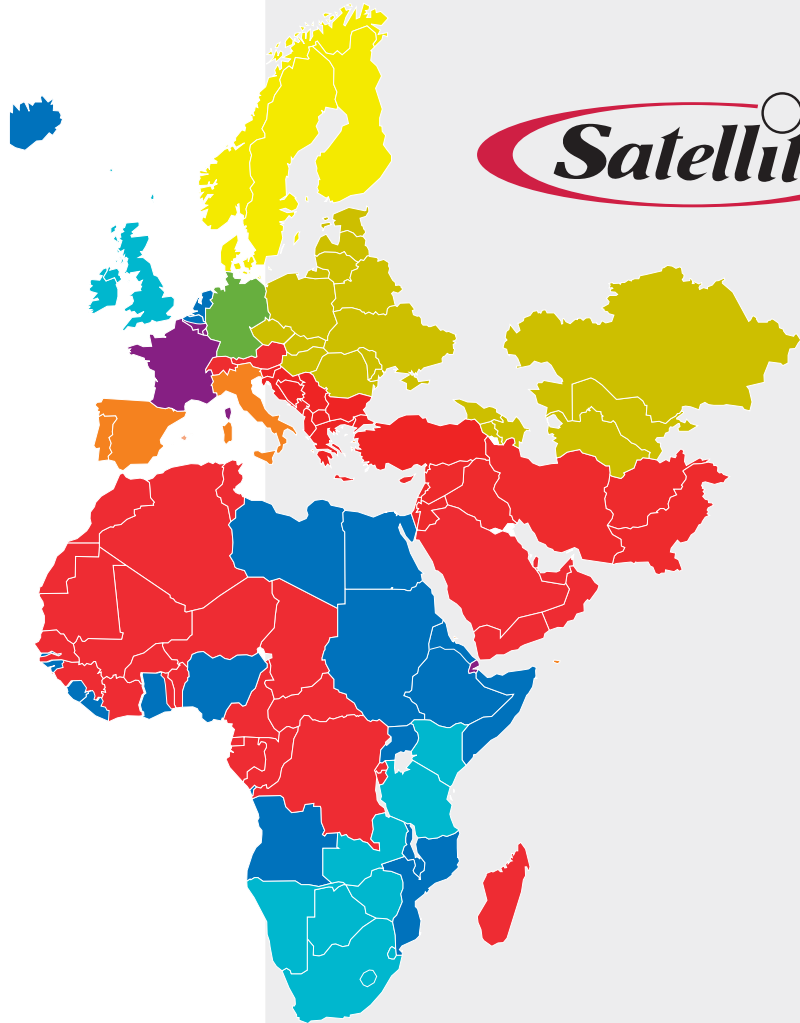
## WAREHOUSES AND OFFICES

---

- **HEADQUARTERS EUROPE**  
Avenue de la Toison d'Or 67  
1060 Brussels • Belgium  
Tel: +32 2 542 56 56
- **WAREHOUSE AND OFFICE GERMANY**  
Port number 7556 • Hamburger Straße 50  
47229 Duisburg • Germany  
Tel: +49 2065 54544 0
- **WAREHOUSE AND OFFICE UK**  
Unit 2 Pool Road Industrial Estate • Pool Road  
Nuneaton • CV10 9AE • UK  
Tel: +44 1530 515216
- **WAREHOUSE AND OFFICE ITALY**  
Via Campania 17  
53036 Poggibonsi, Siena • Italy  
Tel: +39 346 5067830 • +39 392 1528820
- **WAREHOUSE AND OFFICE POLAND**  
Wojciecha z Brudzewa 38  
62-800 Kalisz • Poland  
Tel: +48 692 492 746
- **OFFICE THE NETHERLANDS**  
De Giessen 3  
8253 PR Dronten • Nederland  
Tel: +31 321 725190

[www.satelliteindustries.eu](http://www.satelliteindustries.eu)

[info@satelliteindustries.com](mailto:info@satelliteindustries.com)



Active member of the following associations:





Stowarzyszenie Branży  
Mobilnych Toalet



Follow us on social media

 /satelliteindustries

 @satindustries

 Satellite Industries EMEA

 Satelliteind